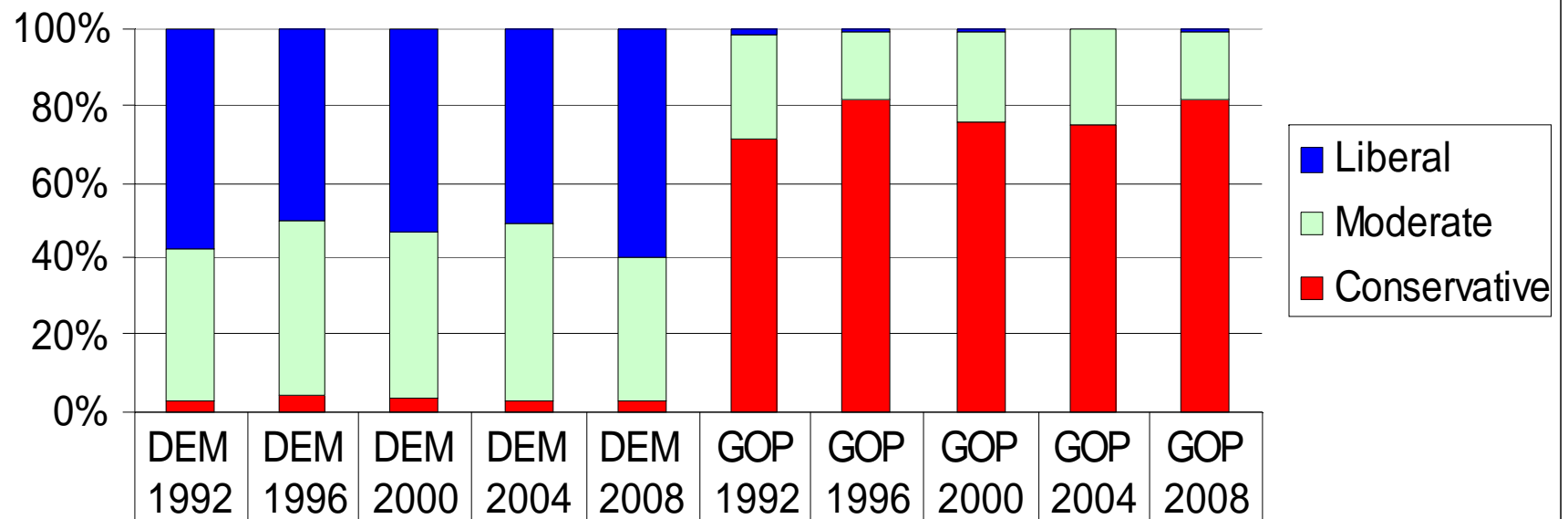


The State of Party Elites
National Convention Delegates
1992-2008

Party Elite Study (PES)

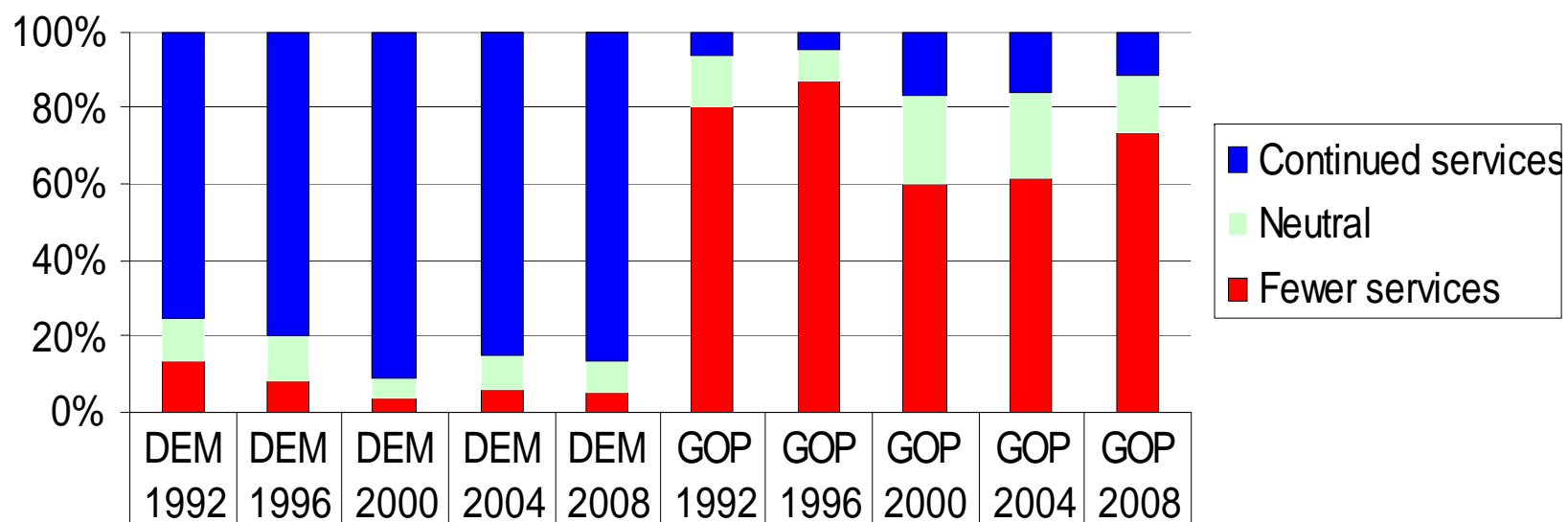
- Surveys of national conventional delegates, conducted since 1974
- 2008 surveys conducted in fall of election year
- 582 Democratic delegates (response rate 40%)
- 494 Republican delegates (response rate 33%)

Figure 1 Delegates and Ideology, 1992-2008



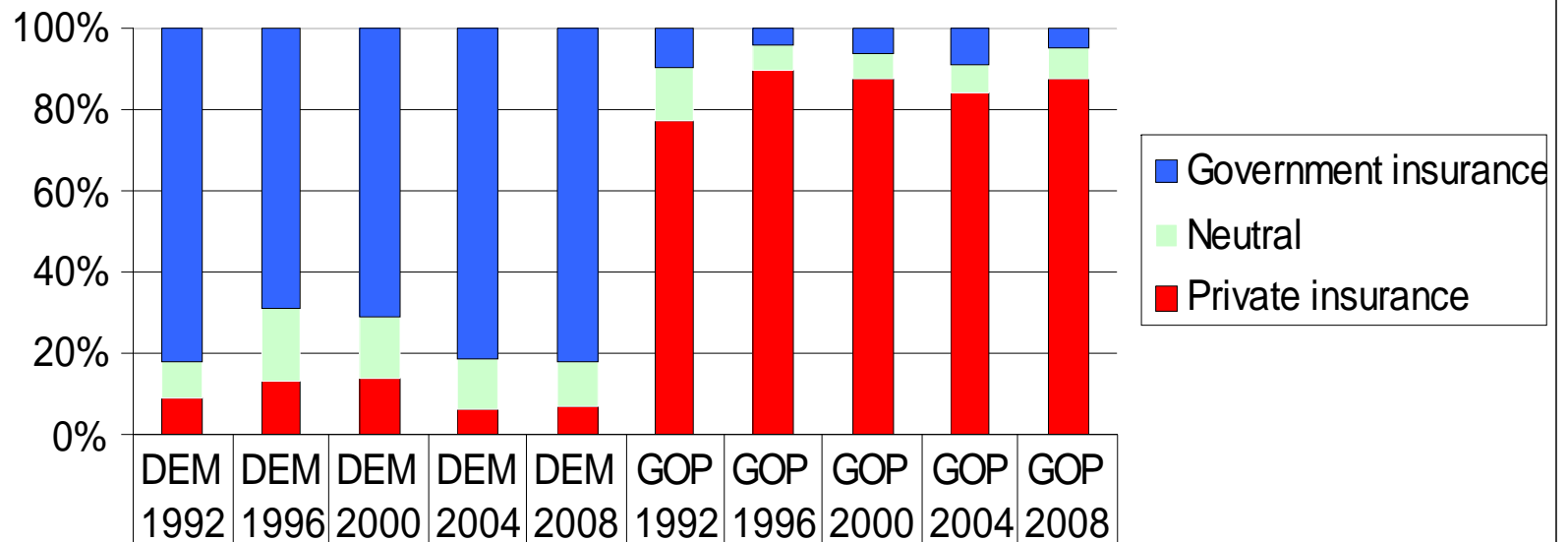
■ Liberal	57%	50%	54%	51%	60%	1%	0%	1%	0%	1%
■ Moderate	40%	46%	43%	47%	37%	27%	19%	24%	25%	18%
■ Conservative	2%	4%	4%	3%	3%	71%	81%	76%	75%	81%

Figure 2 Delegates and Government Services, 1992-2008



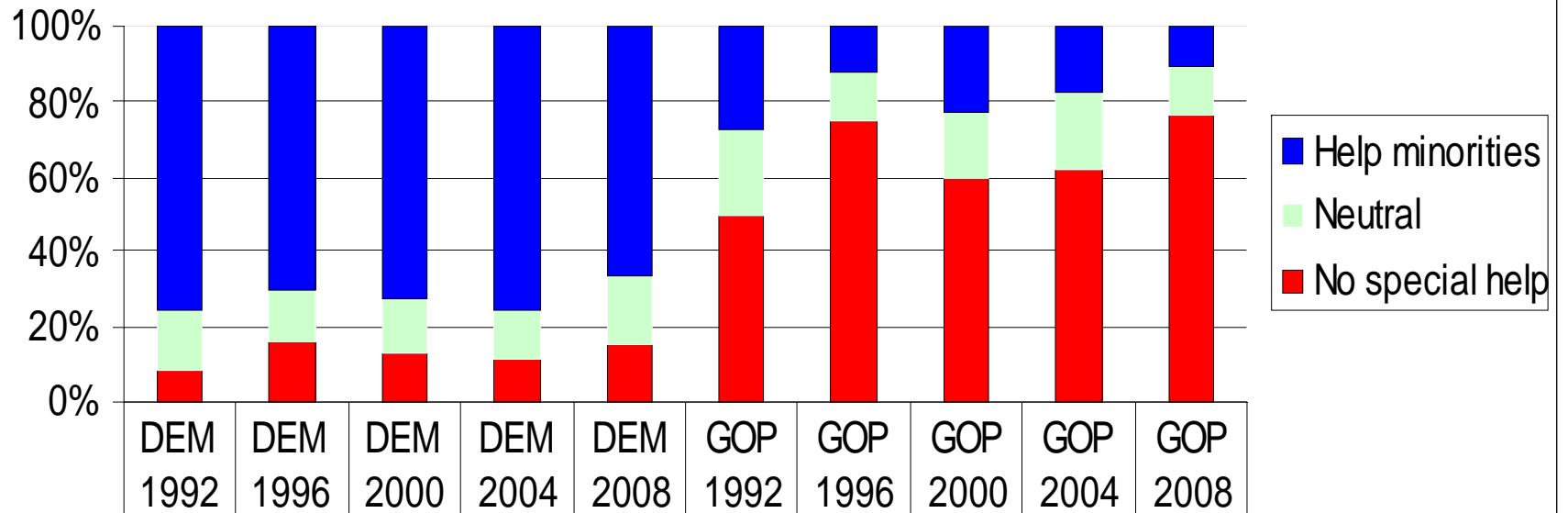
■ Continued services	75%	80%	91%	85%	86%	6%	5%	17%	16%	11%
■ Neutral	11%	11%	6%	9%	8%	13%	8%	23%	22%	15%
■ Fewer services	14%	8%	4%	6%	5%	80%	87%	61%	62%	74%

Figure 3 Delegates and Health Insurance, 1992-2008



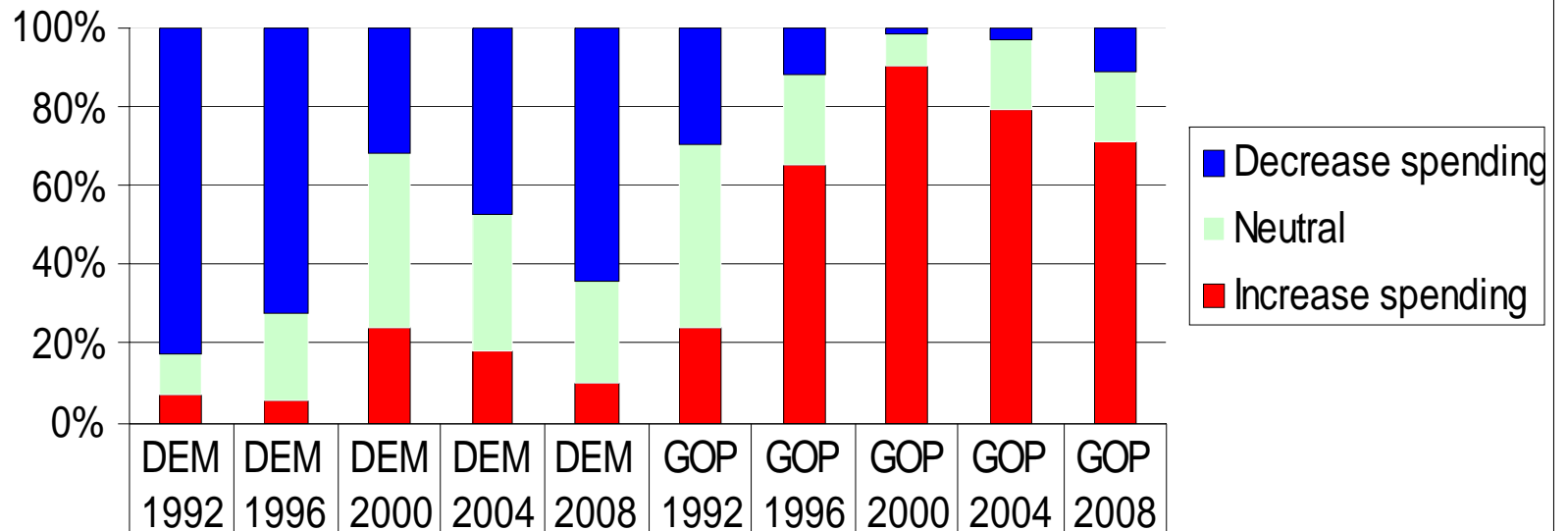
Government insurance	82%	69%	71%	81%	82%	10%	4%	7%	9%	5%
Neutral	9%	18%	16%	12%	11%	13%	6%	6%	7%	8%
Private insurance	9%	13%	13%	6%	7%	77%	90%	87%	84%	87%

Figure 4 Delegates and Aid Minorities, 1992-2008



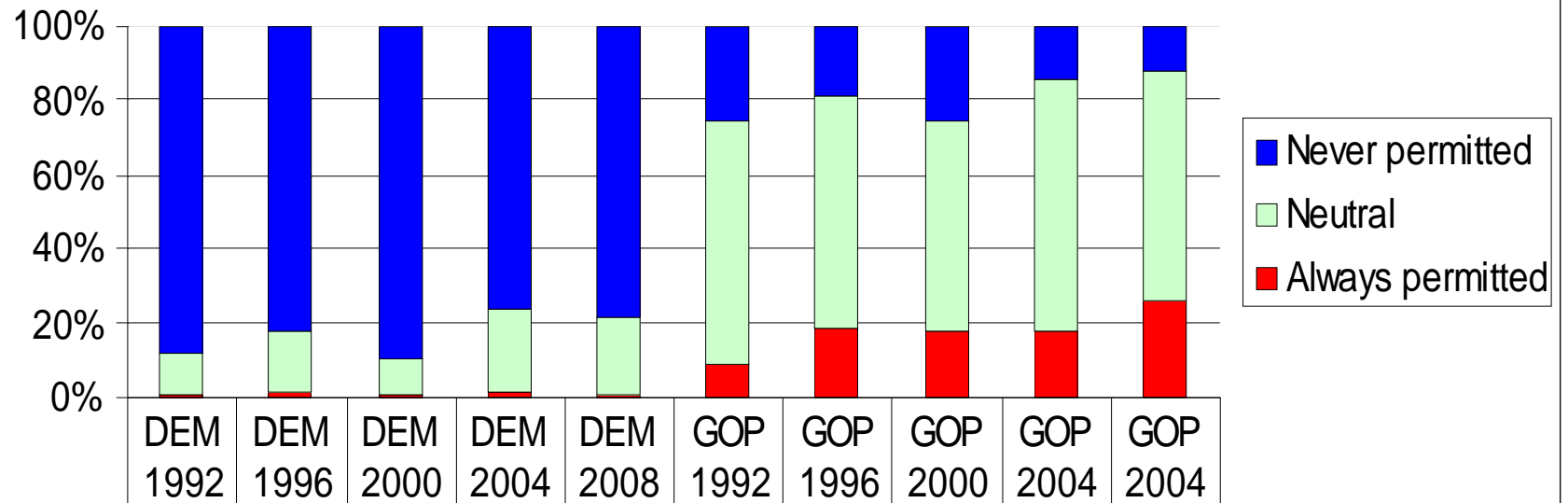
Help minorities	76%	71%	73%	76%	66%	28%	12%	23%	18%	11%
Neutral	16%	14%	14%	13%	19%	23%	13%	17%	20%	13%
No special help	8%	16%	13%	12%	15%	50%	75%	60%	62%	76%

Figure 5 Delegates and Defense Spending, 1992-2008



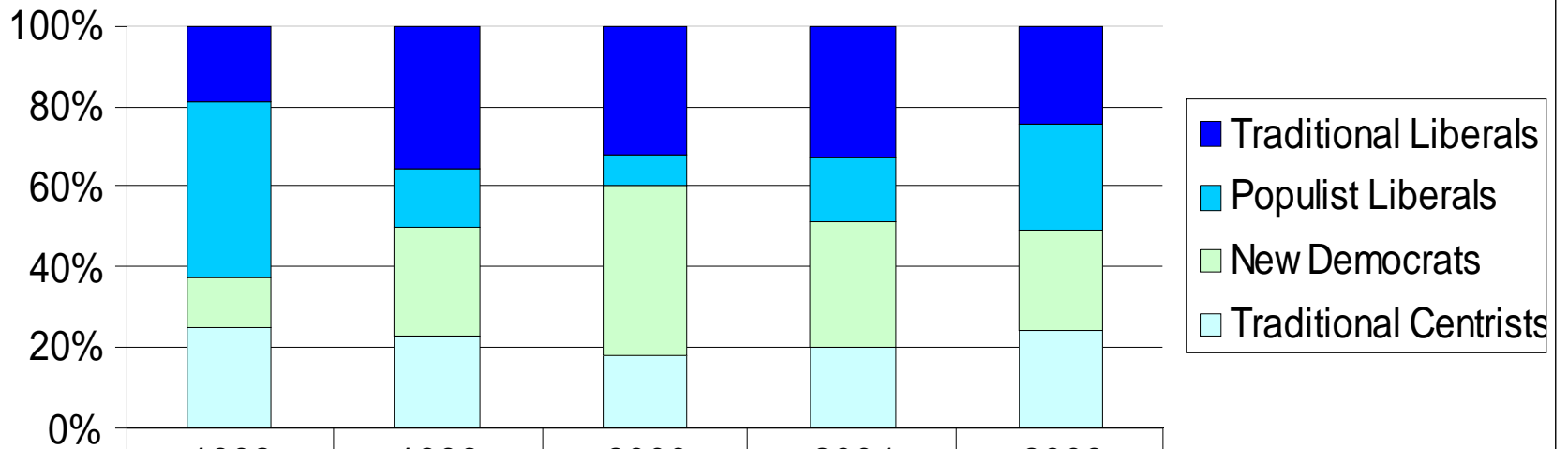
Decrease spending	83%	72%	32%	47%	64%	30%	11%	2%	3%	11%
Neutral	11%	22%	44%	35%	26%	46%	23%	8%	18%	18%
Increase spending	7%	6%	24%	18%	10%	24%	66%	91%	79%	71%

Figure 6 Delegates and Abortion, 1992-2008



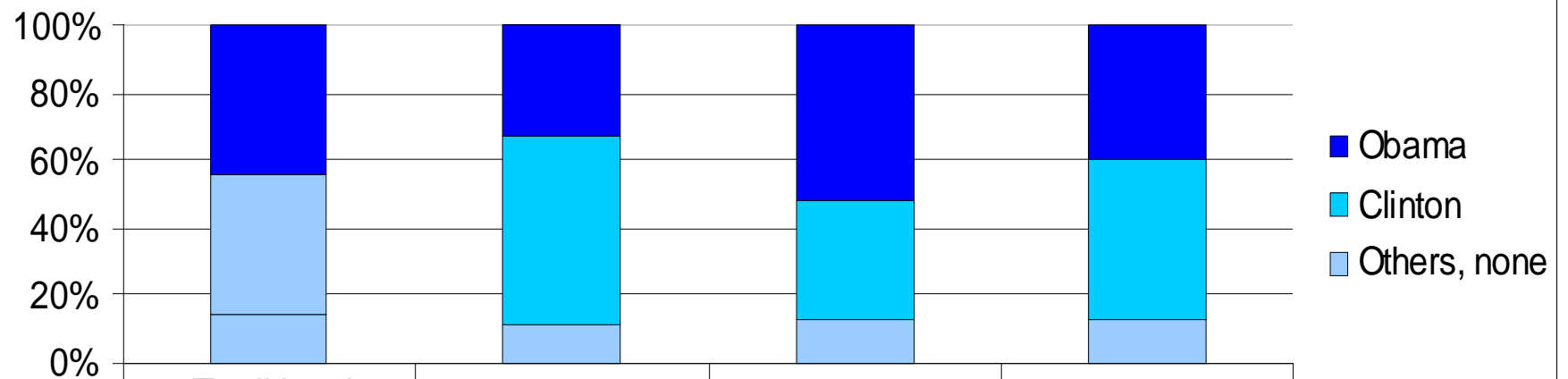
■ Never permitted	88%	82%	90%	76%	79%	25%	19%	26%	15%	12%
■ Neutral	11%	16%	9%	23%	20%	65%	63%	57%	68%	62%
■ Always permitted	1%	1%	1%	1%	1%	9%	18%	18%	17%	26%

Figure 7 Delegates and Democratic Factions, 1992-2008



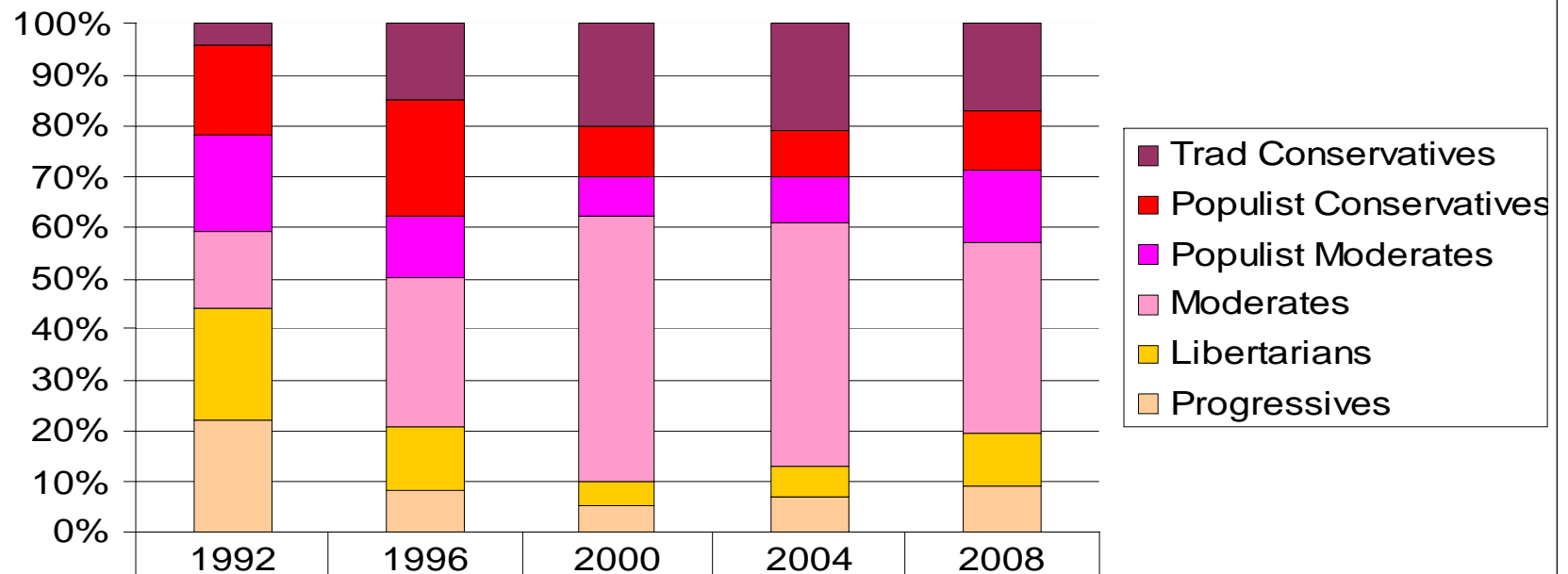
■ Traditional Liberals	19%	35%	32%	33%	25%
■ Populist Liberals	44%	15%	8%	16%	26%
■ New Democrats	12%	27%	42%	31%	25%
■ Traditional Centrists	25%	23%	18%	20%	24%

Figure 8 Initial Candidate Preferences and Democratic Factions, 2008



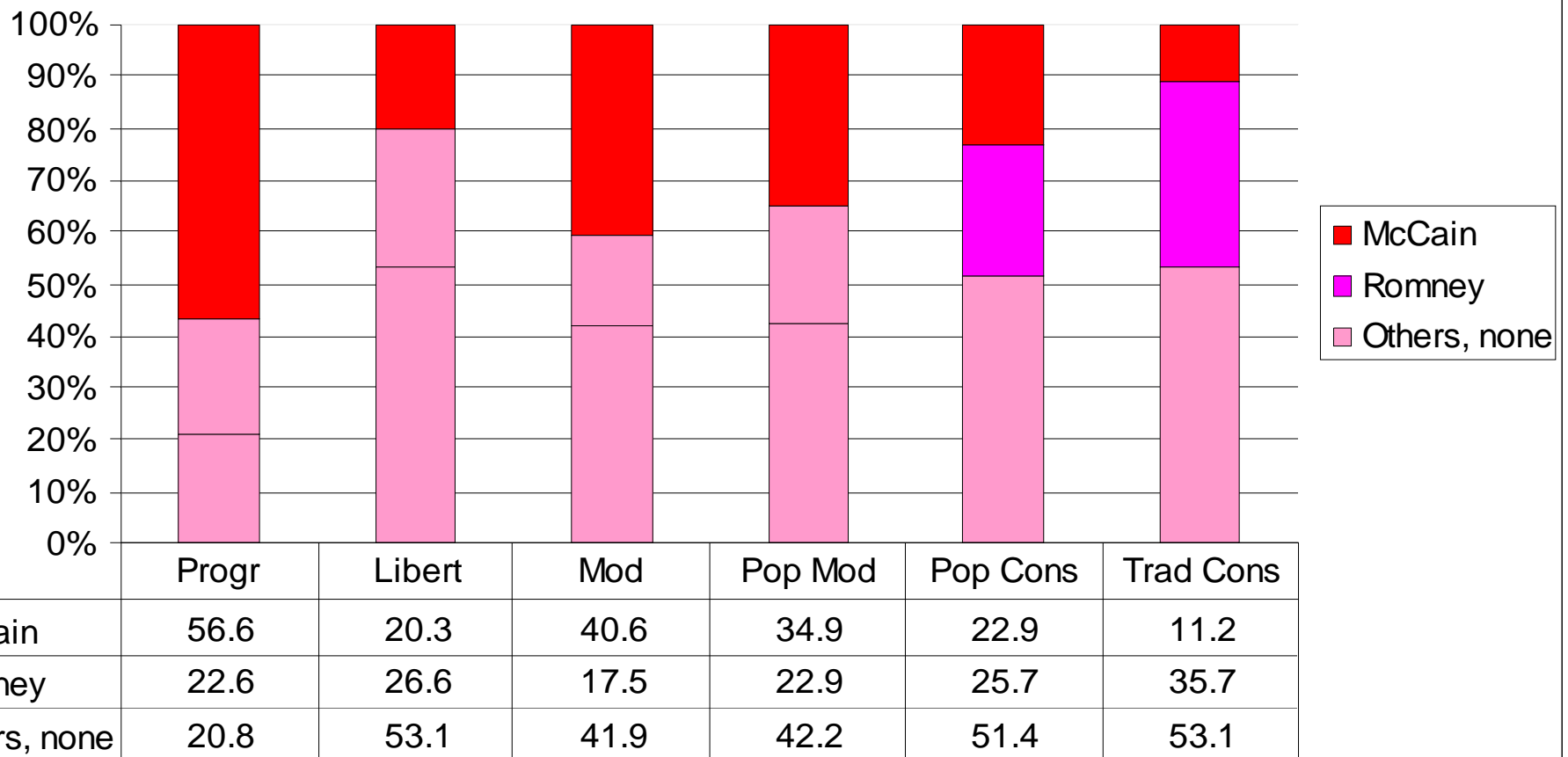
	Traditional Centrists	New Democrats	Populist Liberals	Traditional Liberals
■ Obama	44	33	52	40
■ Clinton	41	57	35	47
■ Others, none	14	11	13	13

Figure 9 Delegates and Republican Factions, 2008



Trad Conservatives	4%	15%	20%	21%	17%
Populist Conservatives	18%	23%	10%	9%	12%
Populist Moderates	19%	12%	8%	9%	14%
Moderates	15%	29%	52%	48%	38%
Libertarians	22%	13%	5%	6%	10%
Progressives	22%	8%	5%	7%	9%

Figure 10 Initial Candidate Preferences and Republican Factions, 2008



The State of Party Elites
National Convention Delegates
1992-2008