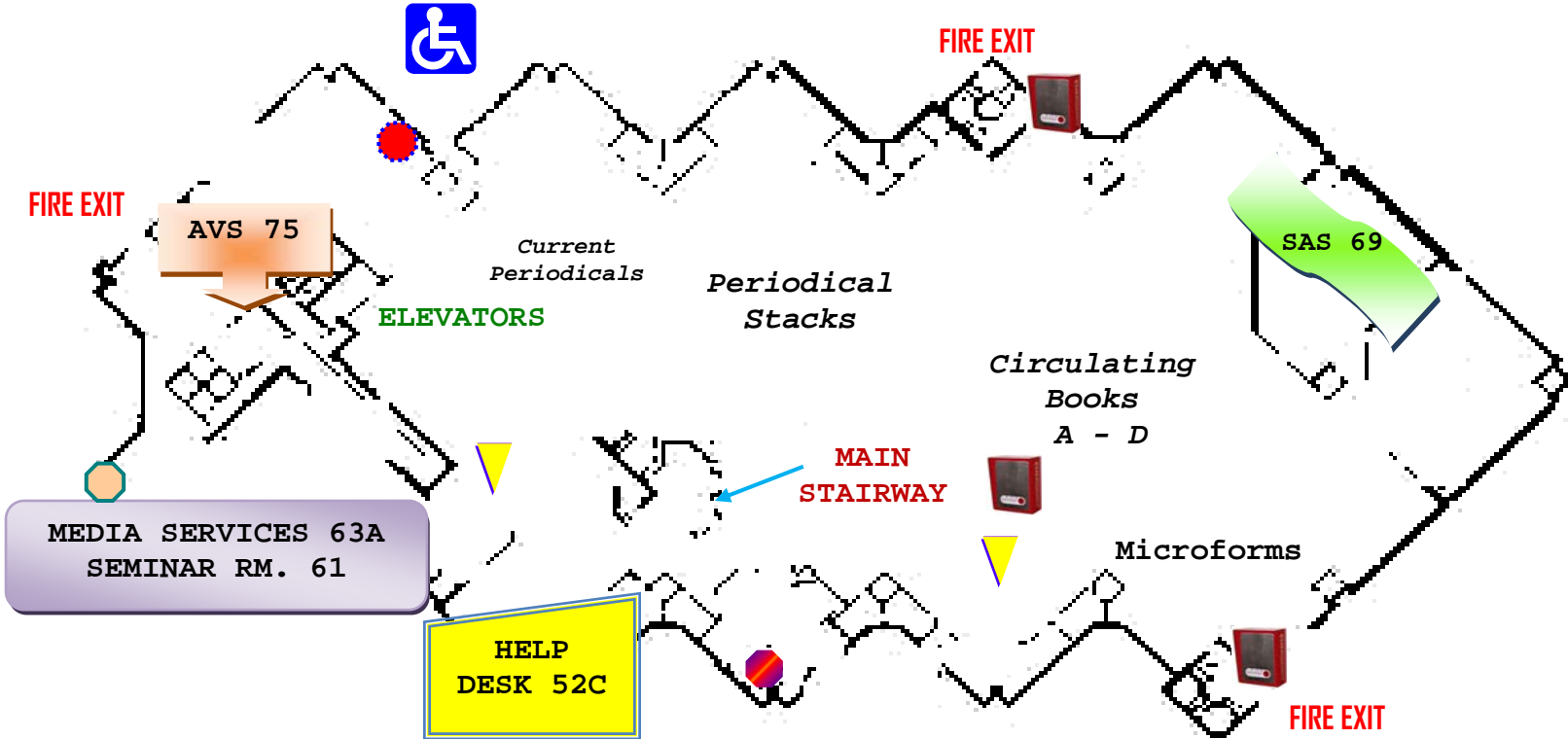










BIERCE LIBRARY MAP



GROUND FLOOR

- | | | | | | |
|---|----------------------|---|--|---|-------------------------|
|  | Emergency Phone |  | Media Services
(Newspapers, CDs, DVDs, Audio books) |  | Subject Librarian (63D) |
|  | Handicapped Entrance |  | Restrooms | | |
|  | | | | | |
|  | Kiosks |  | Student Academic Success | | |