

Defining the “Inquiry-Only” Database (HEPRDINQ)

During the conversion to PeopleSoft v8, users will still be able to access a "read-only" version of the *current* PeopleSoft v7 production database. This is to allow the user offices to have access to data during the time we are performing the v8 conversion when students/staff may still need access to information. This "read-only" database is a copy of our production data *just prior* to the conversion.

In order to connect to the “read-only” copy, the database, **HEPRDINQ**, will need to be defined within the client install of DB2 Connect.

The definition can easily be imported by following these steps:

1. Navigate to one of the following on the workstation, depending on which version of DB2 Connect is installed on the workstation:

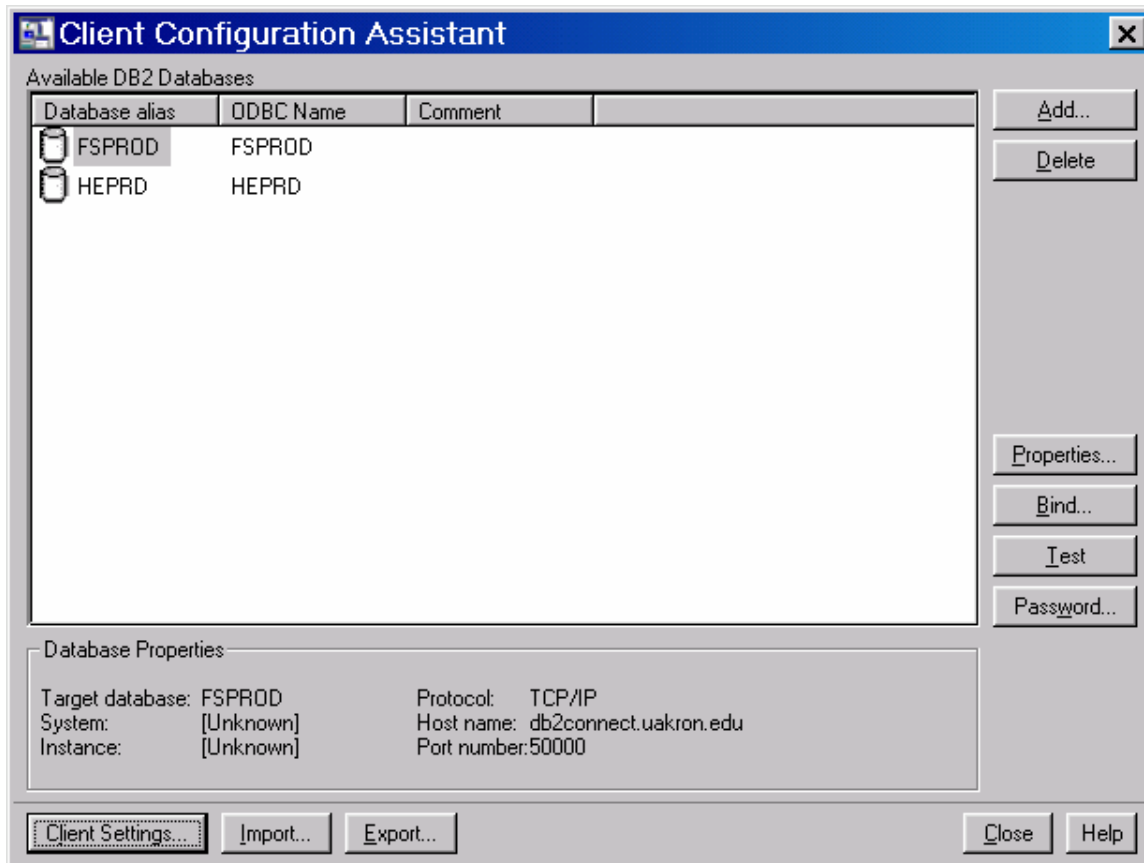
Start, Programs, DB2 for Windows XX (v6)

Or

Start, Programs, IBM DB2 (v7)

Within either of the above program groups, click **Client Configuration Assistant**

A window similar to the following will appear:



2. Click the “Import...” button at the bottom of the screen. A “Select Profile” window will appear. You can now navigate to one of the following locations and import the definition for the “read-only” database, **HEPRDINQ**:

If you have **DB2 Connect v6** (determined from step #1 above), navigate to and choose:

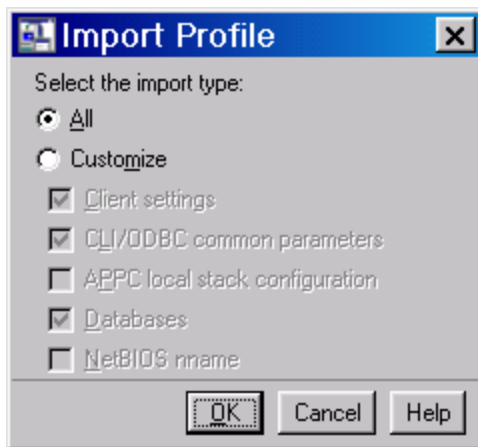
K:\PS Config Files\DB2 Connect Configs\heprdinq (there is no file extension)

If you have **DB2 Connect v7** (determined from step #1 above), navigate to and choose:

K:\PS Config Files\DB2 v7 Connect Configs\heprdinq.spf

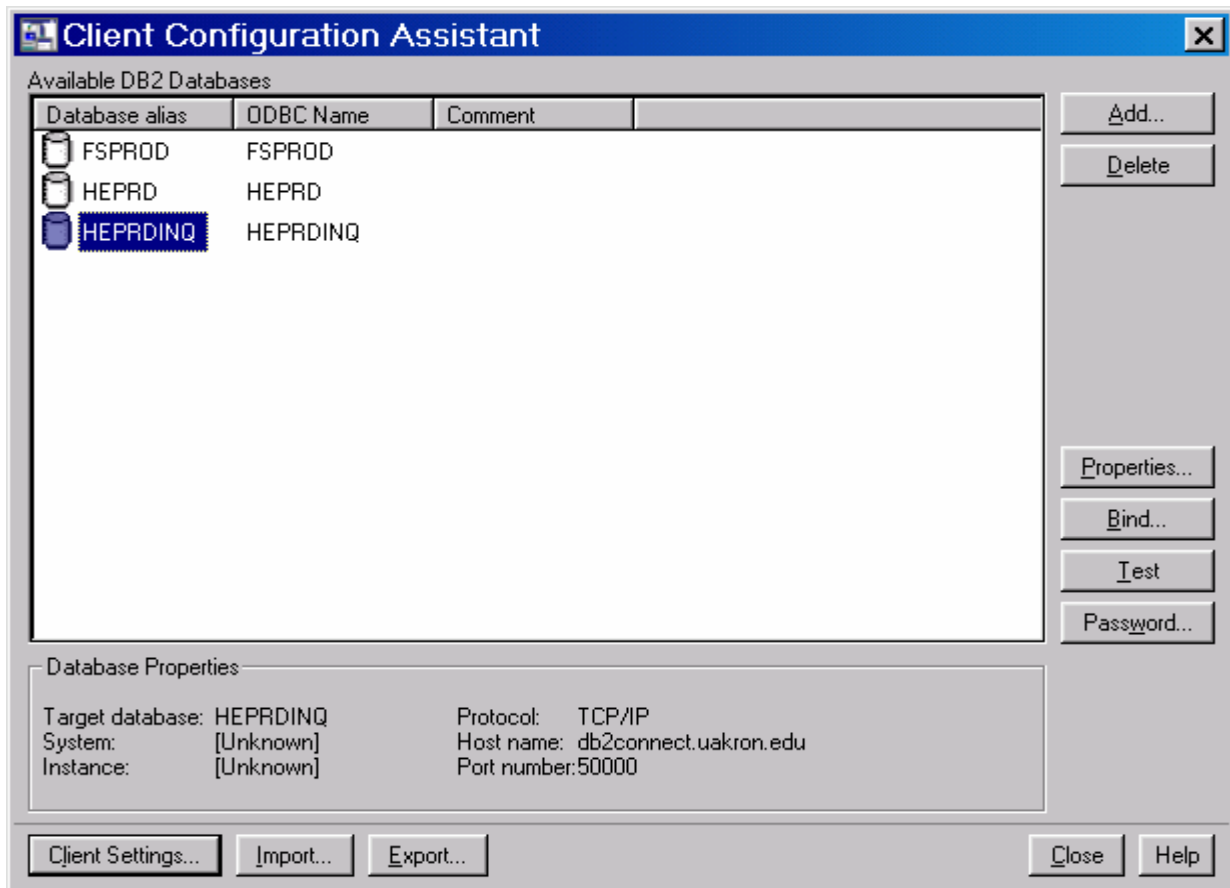
Click **OK** to import the definition for the **HEPRDINQ** database.

The following window will appear:



Make sure the “All” radio button is selected, and click **OK**.

The **HEPRDINQ** database definition should now be visible in the window:



Click the "Close" button to exit out of DB2 Connect Client Configuration Assistant.

You can now connect to the "read-only" v7 PeopleSoft database. Simply connect to PeopleSoft 7 HR/SA database as you always have. When you see the logon as shown below, simply change the "Database Name:" to **HEPRDINQ** and sign in as usual. No updating will be allowed – data can only be viewed.

