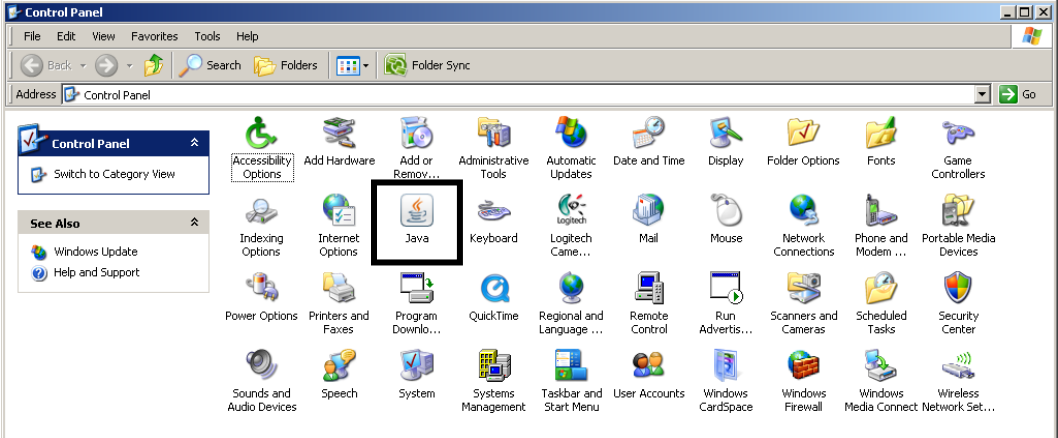


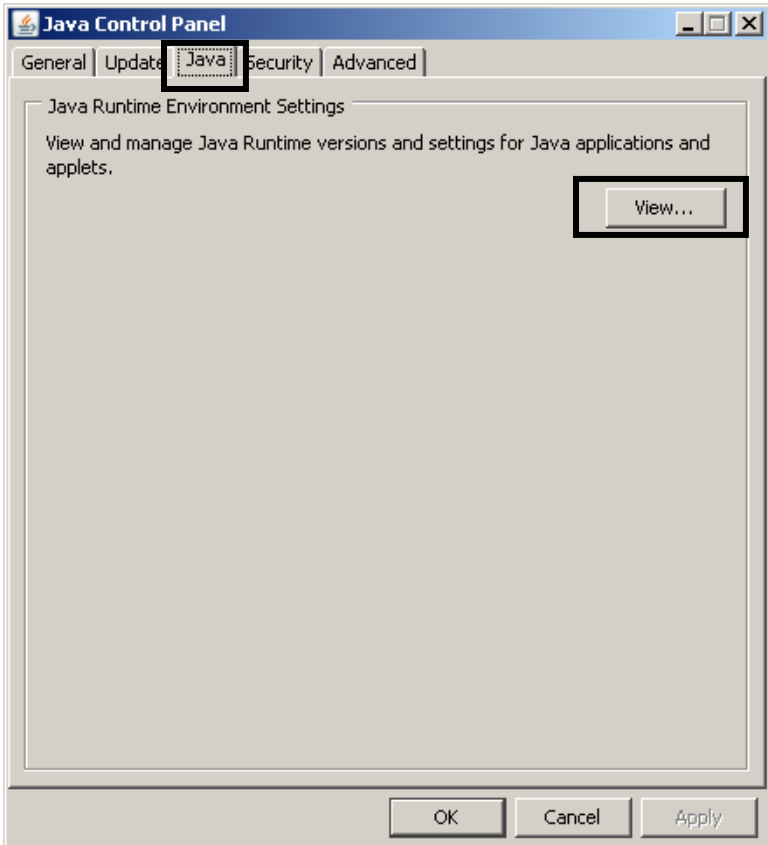

## Appendix A: Troubleshoot Java Settings

Java runtime environment TM (JRE) version 1.6.0\_14 or later is required if you scan documents or drag and drop documents in the Nolij Web panels.

At The University of Akron, the Java updates are “pushed” to your computer, so you will have the most recent version.

If you experience problems when scanning documents or using drag and drop, follow these steps.

1.	<p>Open the Control Panel at Start &gt; Control Panel</p> <p>-OR-</p> <p>Open the Control Panel from My Computer.</p>
2.	<p>Double click the Java icon.</p>  <p>The screenshot shows the Windows Control Panel window. The 'Java' icon is highlighted with a black rectangular box. The Control Panel window title is 'Control Panel' and it shows a grid of various system settings icons including Accessibility Options, Add Hardware, Add or Remove..., Administrative Tools, Automatic Updates, Date and Time, Display, Folder Options, Fonts, Game Controllers, Indexing Options, Internet Options, Keyboard, Logitech Came..., Mail, Mouse, Network Connections, Phone and Modem..., Portable Media Devices, Power Options, Printers and Faxes, Program Downlo..., QuickTime, Regional and Language..., Remote Control, Run Advertis..., Scanners and Cameras, Scheduled Tasks, Security Center, Sounds and Audio Devices, Speech, System, Systems Management, Taskbar and Start Menu, User Accounts, Windows CardSpace, Windows Firewall, Windows Media Connect Network Set..., and Wireless Network Set...</p>

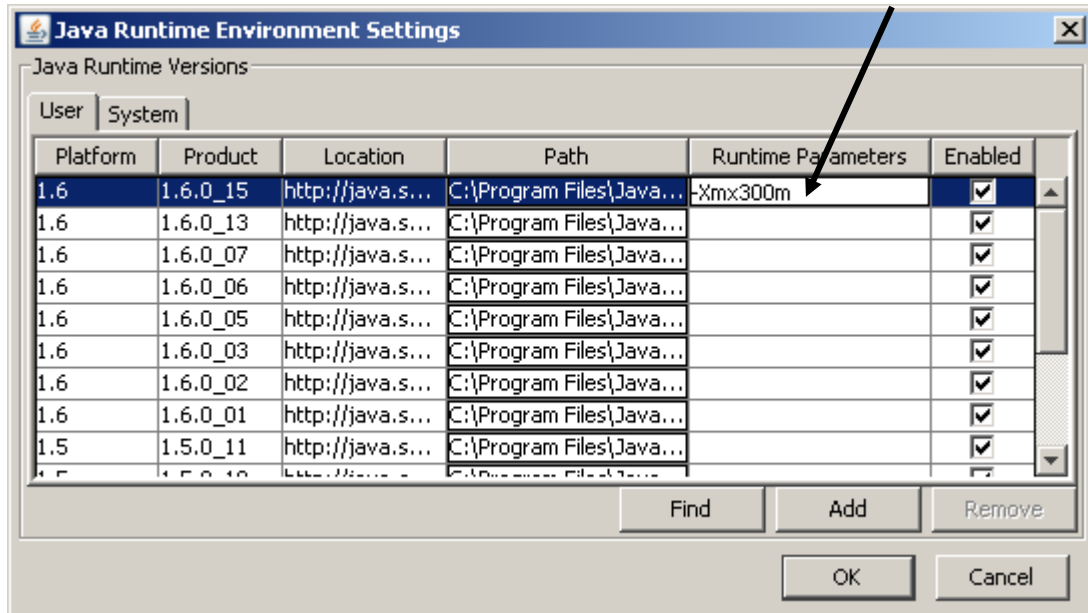
<p>3.</p>	<p>Select the <b>Java</b> tab.</p>  <p>The screenshot shows the 'Java Control Panel' window. The 'Java' tab is selected and highlighted with a black box. Below the tabs, the text 'Java Runtime Environment Settings' is visible, followed by the instruction 'View and manage Java Runtime versions and settings for Java applications and applets.' The 'View...' button is highlighted with a black box. At the bottom of the window are 'OK', 'Cancel', and 'Apply' buttons.</p>
<p>4.</p>	<p>Click on  .</p>

## 5. Enter a new setting.

- Identify the row for the most recently installed version (usually at the top of the list). The most recent version will have the largest product number.

Version 1.6.0\_14 or higher is required.

- Double click in the cell for **Runtime Parameters**.
- Enter **-Xmx300m**. The hyphen and capitalization of the X are important.
- Click on OK.



## 6. Restart your computer in order for the new setting to take effect.