

Using the Webcam

The web camera is located above the display screen. Use the “point and shoot” method.

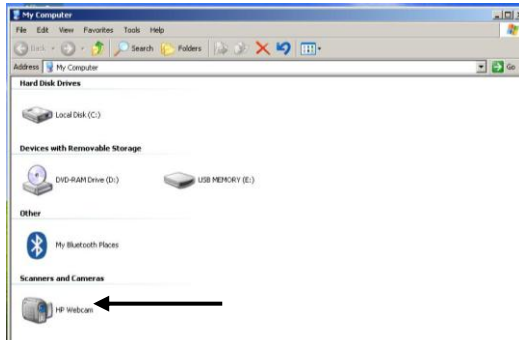


Use the Webcam to:

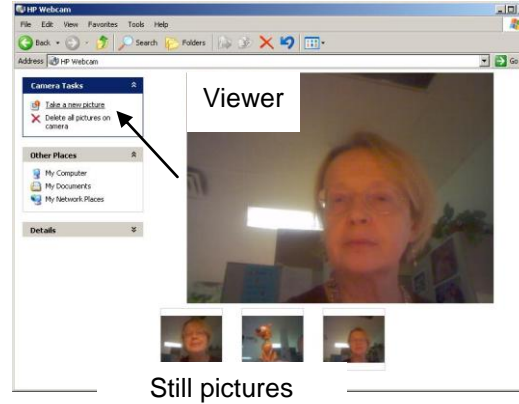
- Take still pictures
- Take video in OneNote
- Store business card information
- Have a video conversation in Office Communicator 5

To take a still picture:

1. Open My Computer.
2. Double click on the HP Webcam icon.



The Webcam window is displayed,



3. Use the viewer to preview the picture.
4. Click on the link “Take a new picture”. The pictures that you take will appear at the bottom of the Webcam window.

NOTE: Right click on a still picture to preview, save, copy or delete it.


To take video in OneNote:

Use the Tools > Audio and Video Recording command from the OneNote menu. The Audio and Video Recording toolbar is displayed.

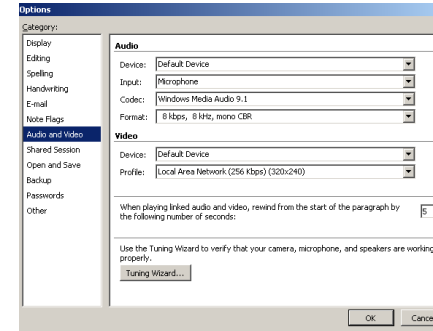


Refer to the notes on pages 50-51 of the manual “Tablet PC Quick Start.”

NOTE: Click on the audio and video settings

tool in the toolbar  to review or change

audio and video options.



To store business card information:

Open the program Presto BizCard 5 on the Tablet PC.

Refer to the separate instructions from Software Training for this software.

To have a video conversation:

Open the instant messaging program Microsoft Office Communicator 2005.

Refer to the separate instructions from Software Training.

NOTE: If you did not receive a hard copy of any of the instructions referenced in this pamphlet, download the instructions from our website or contact us at pstrain@uakron.edu or x6391.

The following additional instructions may be of interest:

- Tablet PC Quick Start manual
- Presto BizCard 5 quick reference pamphlet
- Microsoft Office Communicator 2005 lessons

Using Bluetooth Services and Using the Webcam

on the HP 2710p Tablet PC



The University of Akron Software Training Services

pstrain@uakron.edu

<http://www.uakron.edu/its/learning/training/index.php>

330.972.6391

Using Bluetooth Services

The HP 2710p Tablet PC has an internal Bluetooth adapter, so it is able to communicate with other Bluetooth devices.

Bluetooth is a specification for wireless personal area networks. It provides a way to connect and exchange information between devices, such as cell phones, laptops, PCs, printers, digital cameras and video game consoles. Up to eight devices can connect simultaneously.

Bluetooth enables these devices to communicate with each other when they are in range, using a radio communications system. Transmission power is extremely low to save battery power.

Things to know before you begin:

- When setting up Bluetooth devices, you need to choose to make the device available to other devices.
- Follow and respond to the prompts to allow the connection.
- When prompted for a Pin Code to enable the pairing, type four zeroes **0000**.
- Once a device has connected with the Tablet, it will exist in the window opened by selecting Find Bluetooth devices. If the device cannot be found, it is listed but a message displays that it cannot be found/is not connected.
- When a connection is made, the Bluetooth icon's symbol changes from white to green to indicate that pairing is complete.
- In the Find a device window, right click on a device to connect.

To initially configure Bluetooth on your Tablet:

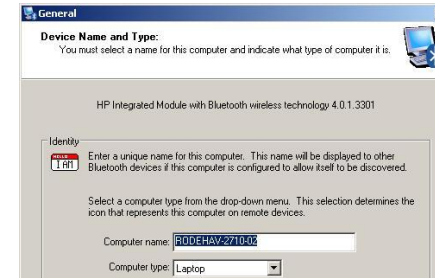
1. Place the other Bluetooth devices, such as a headset or cell phone within a few feet of the Tablet.
2. Follow the instructions that came with the device (headset or cell phone) to enter **pairing mode**. When connecting, both the Tablet and the new device must be in pairing mode. Both devices need to be looking for one another.
3. On the Tablet, double click the Bluetooth icon in the system tray or double tap the My Computer icon and double tap the My Bluetooth Places icon.



The Bluetooth configuration wizard is opened.



4. Tap to mark the checkboxes for your preferences for the location(s) of the Bluetooth access icon.
5. Tap on Next. The Device Name and Type step of the wizard is displayed.

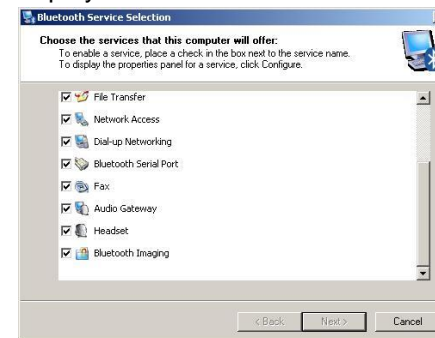


Be sure that the name of your computer and the computer type of laptop are displayed. NOTE: The name of your computer is available by right clicking on the My Computer icon, selecting Properties from the list that appears and reviewing the Computer Name tab.

6. Tap on Next. This message is displayed.

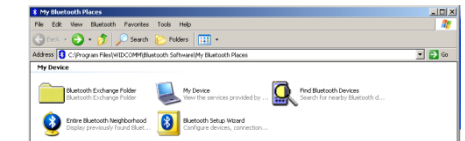


7. Tap on Next. The Service Selection step is displayed.



Make any changes to the Service Selection, if you wish.

8. Click on Next.
 - Bluetooth services are enabled and configured.
 - The Bluetooth icon is placed as you requested in step 3.
 - The My Bluetooth Places window is displayed.



This window can be accessed at anytime by clicking on the Bluetooth icon or selecting Start > All Programs > My Bluetooth places.

To connect to a Bluetooth device:

1. In the My Bluetooth Places window, double tap on the Find Bluetooth Devices icon. A new window is displayed. When a device is located, an icon is displayed for it.
2. Right click on a device's icon.
3. Select Pair Device from the shortcut menu. A message box displays and a Bluetooth Pin is requested.
4. Type four zeroes as the Pin number – **0000**.
5. Click on OK. The device's icon is marked with a check to indicate that it is connected.



6. The My Bluetooth window may be closed or minimized.