

## Installing and Running the PointSec Software

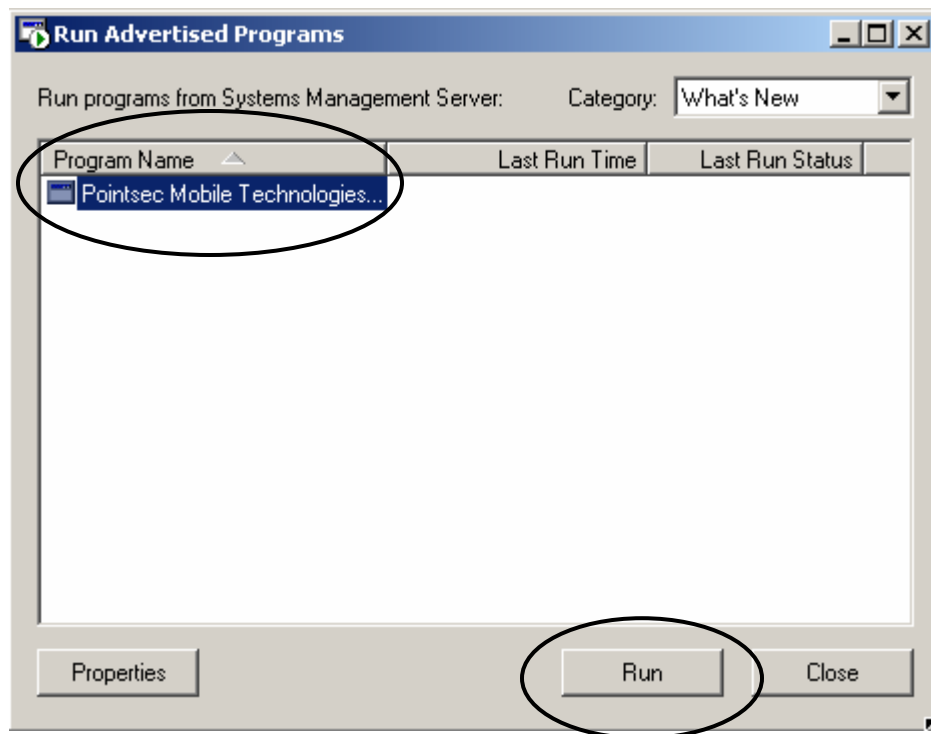
### Installing Pointsec

1. Double-click the Run New Program  icon located in the system tray in the bottom right corner of the desktop.



As an alternative, click on **Start – Control Panel – Run Advertised Programs** and locate **Pointsec Mobile Technologies** in the Program Name column.

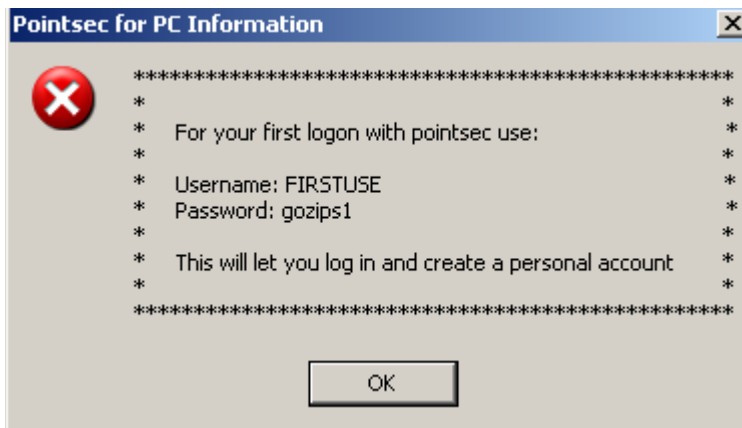
2. Click once on “**Pointsec Mobile Technologies**” to highlight the program and then click the **Run** button.



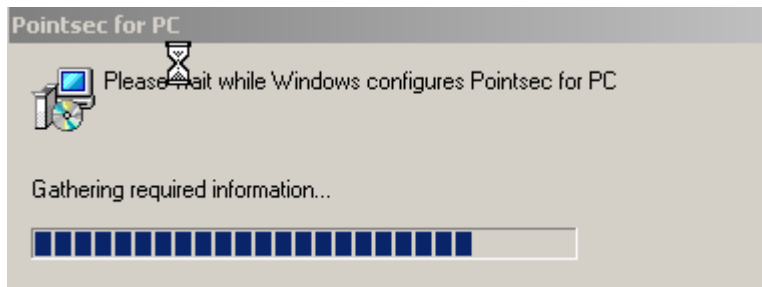
3. A dialog box will appear providing you with a username and password to use the first time you logon to PointSec. **Be sure to write this information down so you have it handy when you reboot your computer.**

**IMPORTANT**

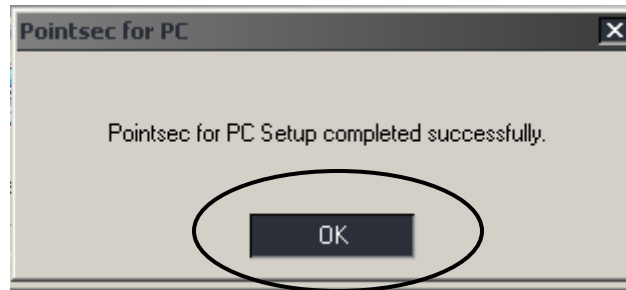
**You will need this username and password the first time you log on to Pointsec – you will then be prompted to create your own username and password!**



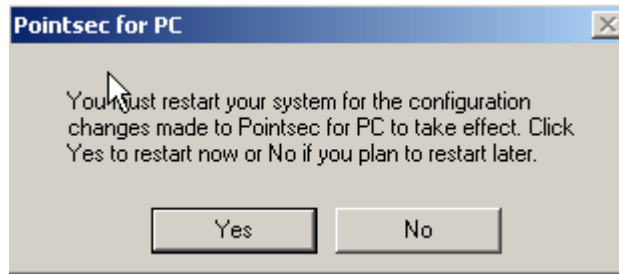
4. The Pointsec software will be installed on your computer. Various dialog boxes, such as the one shown below, will appear to inform you of the progress.



5. You will be informed once the software is successfully installed. Click the **OK** button to continue.

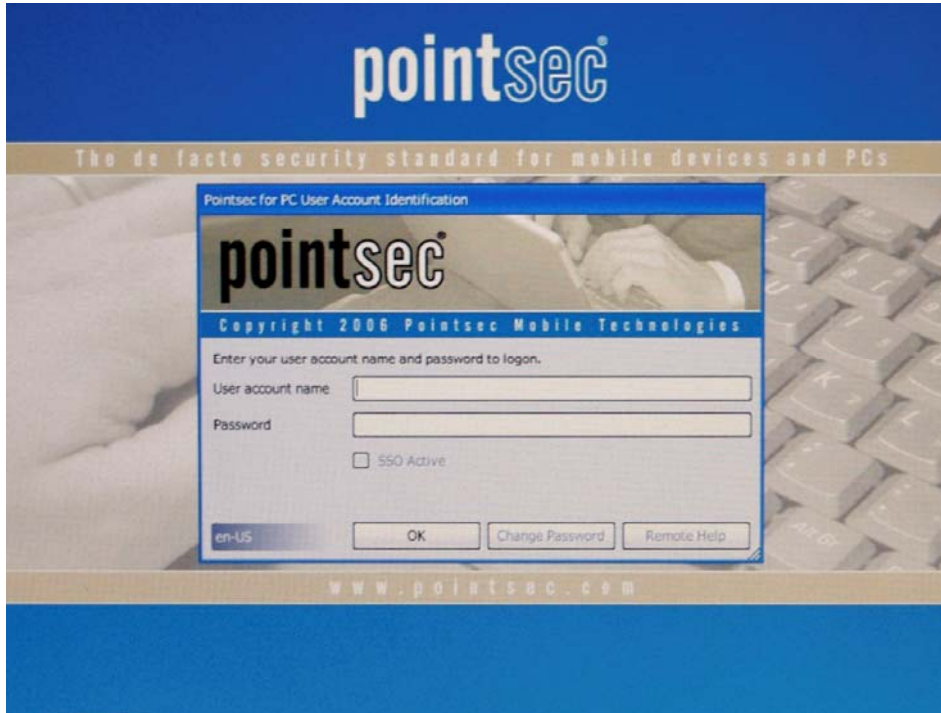


6. You will be notified that you must restart your computer in order for Pointsec to run and encrypt the data on your computer. If you do not want to encrypt your data at the present time you can select "**No**". However, the next time your computer is booted the encryption process will begin automatically.

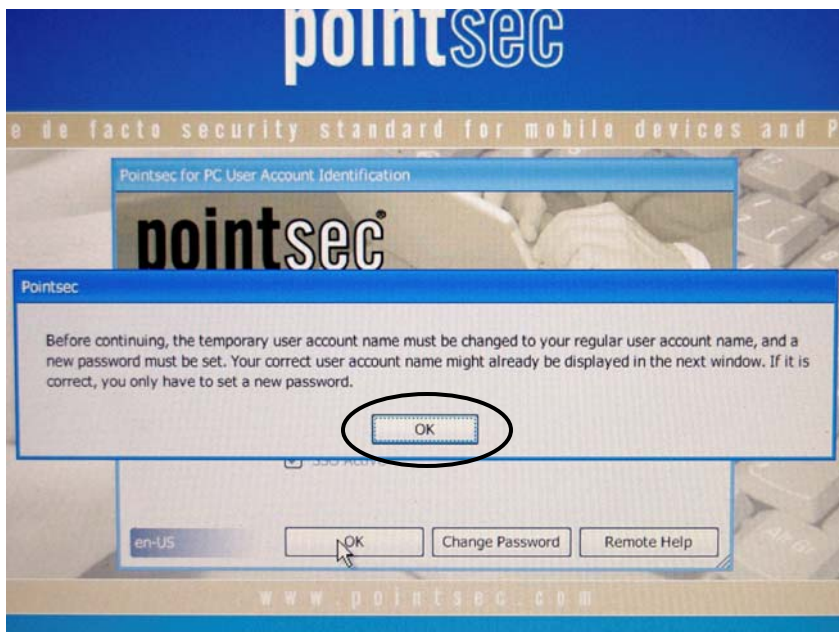


## Running the PointSec (Encryption) Software

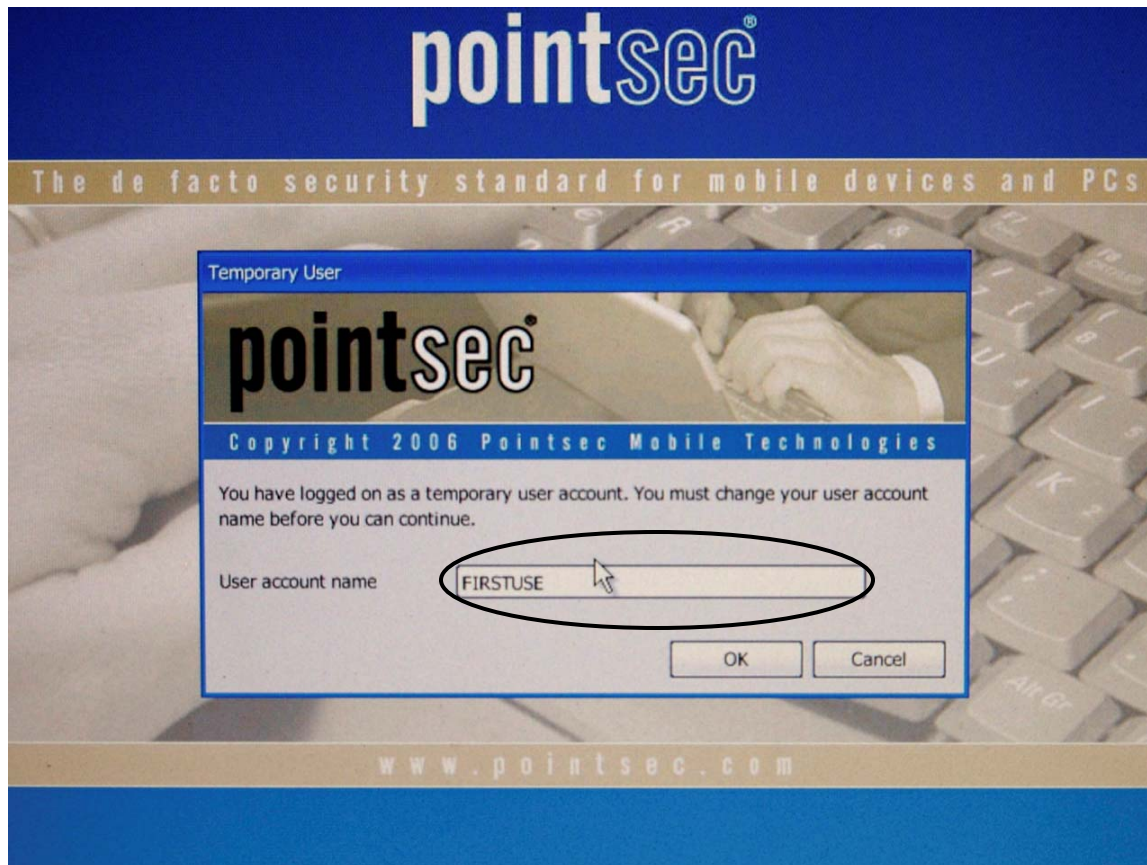
1. The next time the computer is started the PointSec log in screen will appear. You will enter the default account name of **FIRSTUSE** (all capital letters) and password of **gozips1** (all lowercase letters with the number "1" at the end).



2. Next, you will receive a message informing you that you must enter your regular user name and assign a password. Click the **OK** button to continue to the next step.



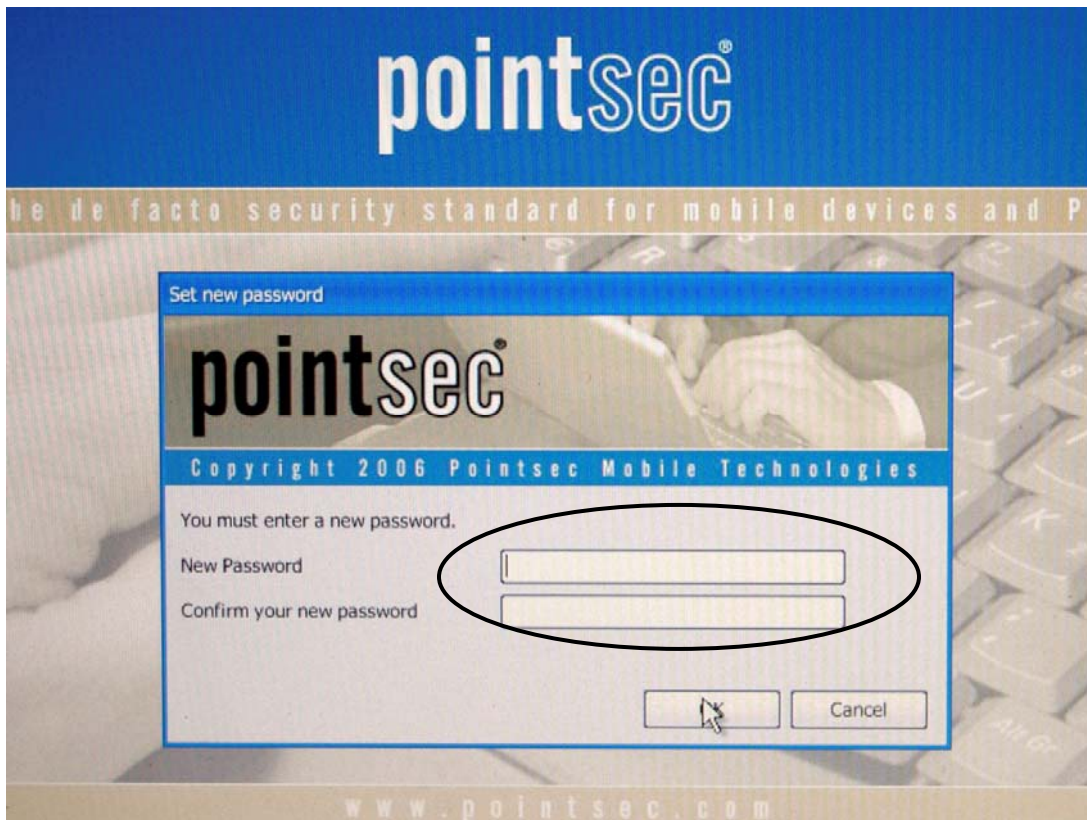
3. The default username will appear in the box. Clear out the username (FIRSTUSE) and replace it with your UAnetID.



4. Next, enter a password. The PointSec password guidelines are as follows:
  - ◆ MUST contain at least one number
  - ◆ May use both upper and lowercase letters
  - ◆ MUST contain at least one letter
  - ◆ MUST be at least 7 characters in length (no maximum length)

NOTE: Your PointSec username and password are **separate** from your UANetID and password. If you wish to change your UANet password (so the two are the same) please visit the following web page:

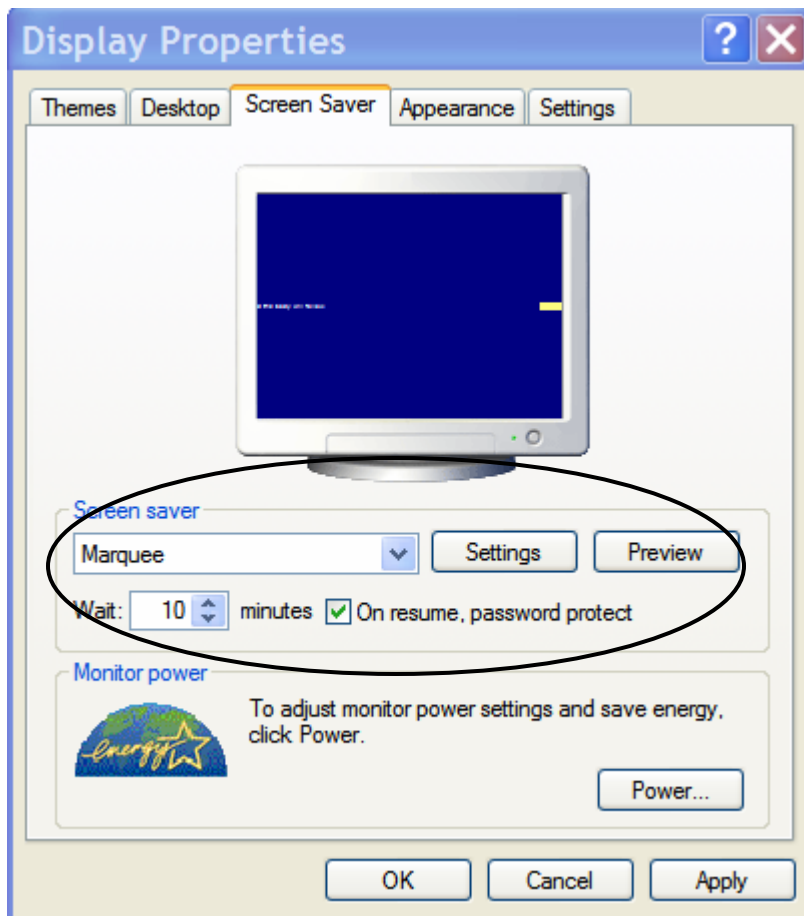
<https://gozips.uakron.edu/zid/app/>



5. PointSec will begin encrypting the hard drive. This process runs in the background and should be transparent. If the process has not completed when you shut down the laptop the process will merely pick up where it left off the next time you boot the computer.
6. From this point forward, whenever you log into your computer you will receive the PointSec login page. Enter the username and password used in Steps 3 and 4. Depending upon whether or not you are connected via the wireless or hard wired, you may also be prompted for your UANetID and password. Keep in mind that these two usernames and passwords are not necessarily the same.

- The PointSec installation will change the screen saver option to wait **10 minutes** and then **“On resume, prompt for password.”** This means you must enter your UAnetID and password when the laptop goes into ScreenSaver mode.

Pointsec may also change your screensaver to the default PointSec screen saver. If you wish to modify your screensaver select **Start – Control Panel – Display** and click the **Screen Saver** tab. Select the desired screen saver from the available list.



We highly recommend that you do **NOT** remove the check from the option titled “On resume, password protect”. Doing so lessens the security and data integrity of the laptop.

*Even if you reset this option, the next time the computer boots the option will be turned back on automatically and the time set to 10 minutes.*