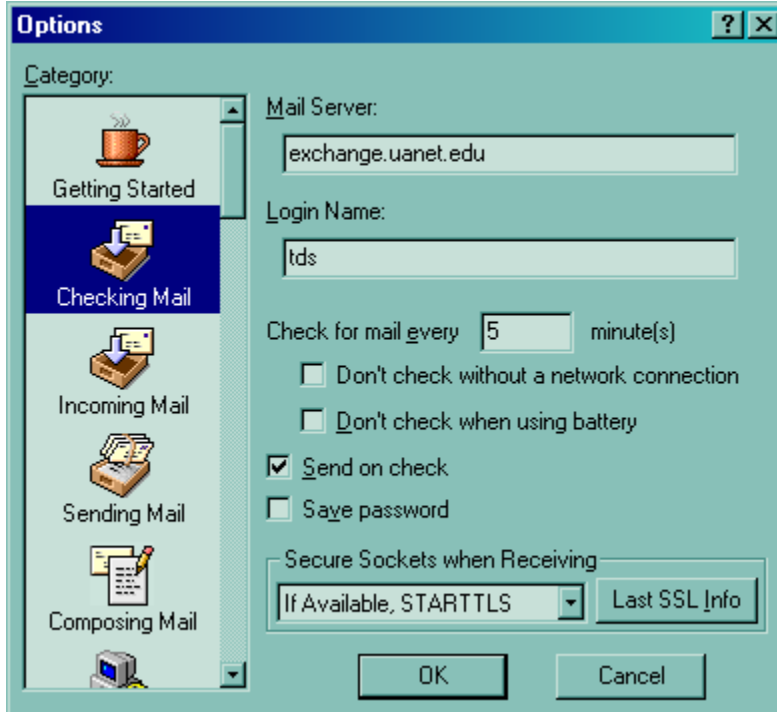


## Configure Eudora to use IMAP

1. From within Eudora select, **Tools- Options**.
2. Select the category **Checking Mail**. Change the Mail Server to **exchange.uanet.edu**. (Note: Do NOT change the Login name – this should be *your* uanetid).

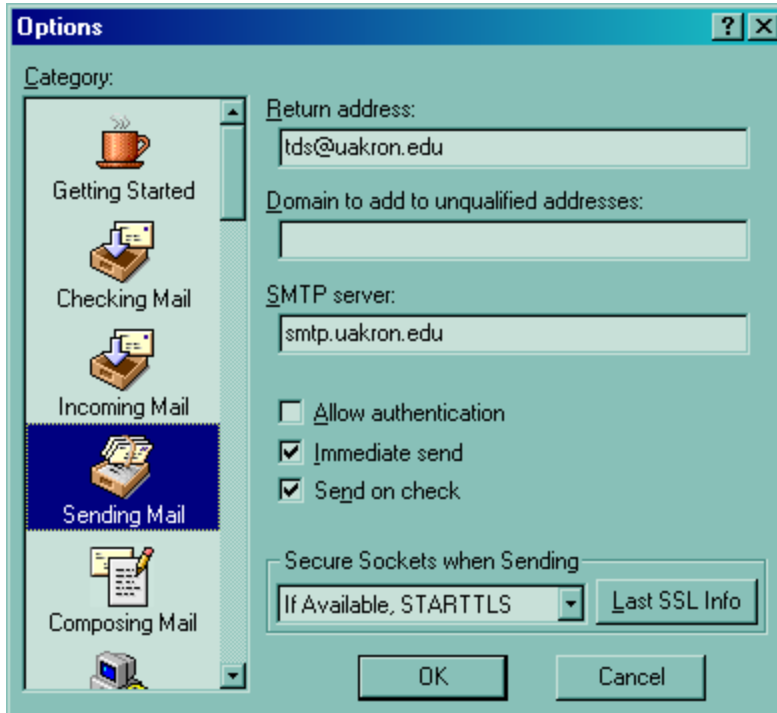


3. Select the category **Incoming Mail**. Change the Server configuration to **IMAP**.



4. For those clients dialing in via the University of Akron modem lines, select the category **Sending Mail**. Change the SMTP server to **smtp.uakron.edu**. (Note: Do NOT change the return address – this should be **your** e-mail address).

*Those clients using AOL, RoadRunner, MSN or some other outside ISP should NOT change the outgoing server name – this must be the server address provided by the ISP.*



5. You are now configured to receive mail from the new server.