

---

## Tools, Internet Options

---

Internet Explorer is a popular **browser** that is used at The University of Akron. A **browser** is software that is used to locate and display Web pages.

Within Internet Explorer, you can make several adjustments to the default settings and this tutorial walks through the changes you can make via the menu option of **Tools, Internet Options**.

Some tasks that this menu option will allow you to do are as follows:

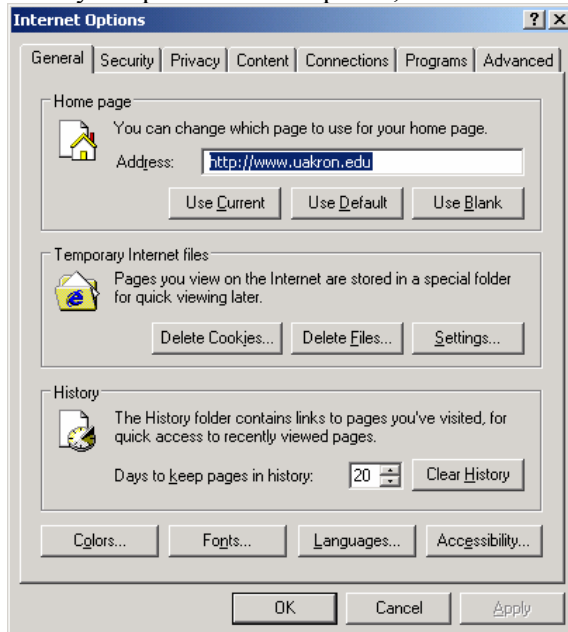
- Change the default home location
- Clear the cache
- Delete cookies
- Adjust the history
- Set the default browser
- Enable cookies

---

### Steps

---

1. After you open Internet Explorer, select from the menu **Tools, Internet Options**.



2. On the General tab:  
In the **Home page** frame, you can adjust what page to use as your default home page. Each time you open Internet Explorer, this site will display.

In the **Address** field, enter the url for the site that you want to set as your home page.

---

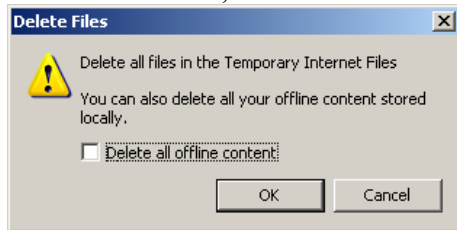
---

**Steps**

3. In the **Temporary Internet files** frame, you can delete the Temporary Internet files.

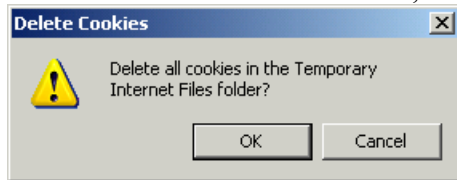
This folder (temporary internet files) contains the web pages that you have recently opened. The web pages are copied to this folder, also called cache, so that if you open them again, they will be displayed quicker. It is a good practice to occasionally clear the cache especially if you find Internet Explorer getting interrupted or performing at a slower rate.

To clear the cache, click on the **Delete Files** button.



Click on the checkbox for **Delete all offline content**, and select **OK**.

There are many Web sites that store information on your computer in a small text file. This is called a cookie. To delete cookies, select the **Delete Cookies** button.



Select **OK**.

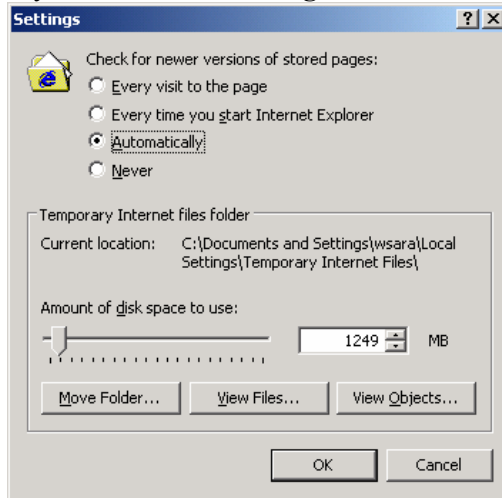
**Note:** The time it takes to clear the Temporary Internet Files folder will vary. It can take several seconds or it can take several minutes to delete this folder.

---

---

**Steps**

4. If you click on the **Settings** button, the following box appears:



There are many options available on the Settings box. The main options are as follows:

**Check for newer versions of stored pages:** These options determine what Internet Explorer does when you visit a site that is already in the cache. Select the option for **Automatically**.

**Amount of disk space to use:** Allows you to specify the amount of disk space, by sliding the lever, that can be used to store the temporary internet files.

**Move Folder:** Click on this button to locate/change the pathname of the folder where Internet Explorer keeps cache files.

**View Files:** Click on this button to view the cache files.

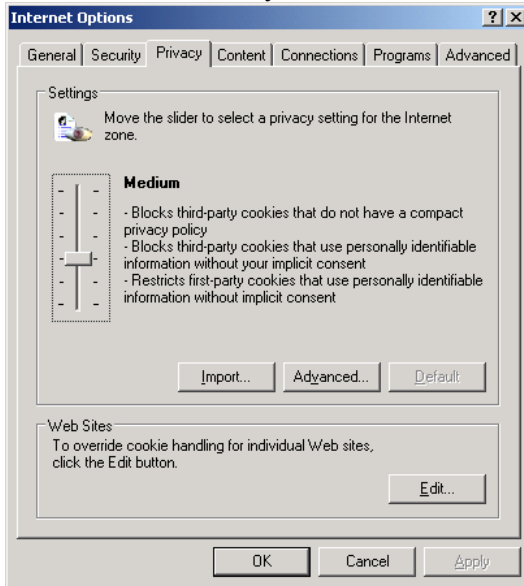
**View Objects:** Click on this button to view a list of objects that have been installed on your system during your Web sessions.

- 
5. In the History frame, you can adjust how many days your viewing history goes back. You can also use the **Clear History** button to remove all history at any time.
-

---

## Steps

### 6. Advance to the Privacy tab.

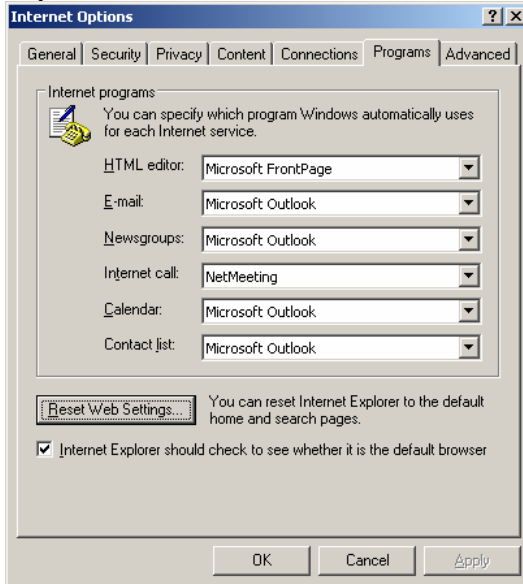


This tab allows you to adjust your cookie settings. Please note that if you disable cookies, you may not be able to use certain features on various Web sites. To make changes, move the lever up (more privacy) or down (less privacy.) It is recommended that you have this setting at **Medium**.

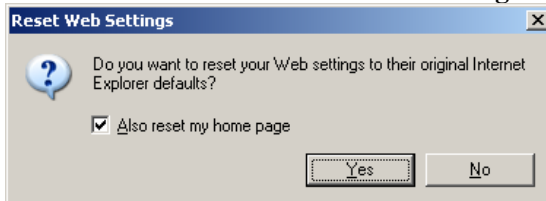
---

**Steps**

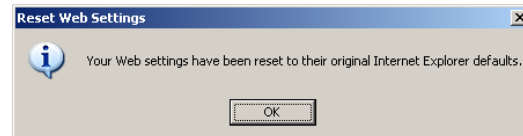
7. Advance to the Programs tab. This tab allows you to set the default browser to Internet Explorer.



Click on the button for **Reset Web Settings**.



Uncheck the box for **Also reset my home page** as this will override what Home Page you have set as a default on the General tab. Click on **Yes**.



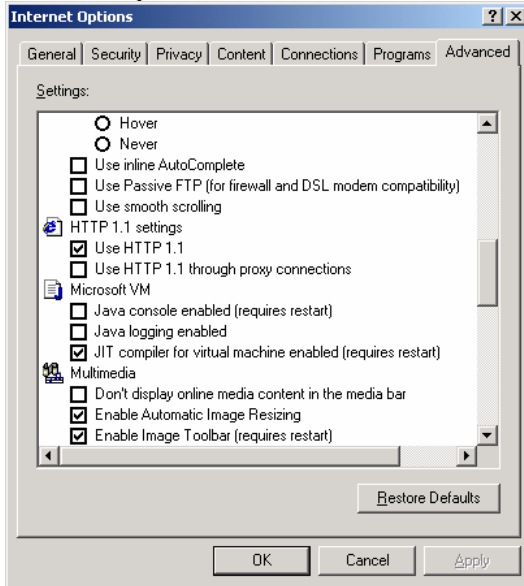
Click on the **OK** button.

---

---

**Steps**

8. Go to the Advanced tab. This tab allows you to make many individual adjustments to how Internet Explorer works.



If you are a WebCT user, you will need to activate the options for **Java console enabled** and **Java logging enabled**.