

Configure McAfee for Automatic Updates On Personal/Home Computers

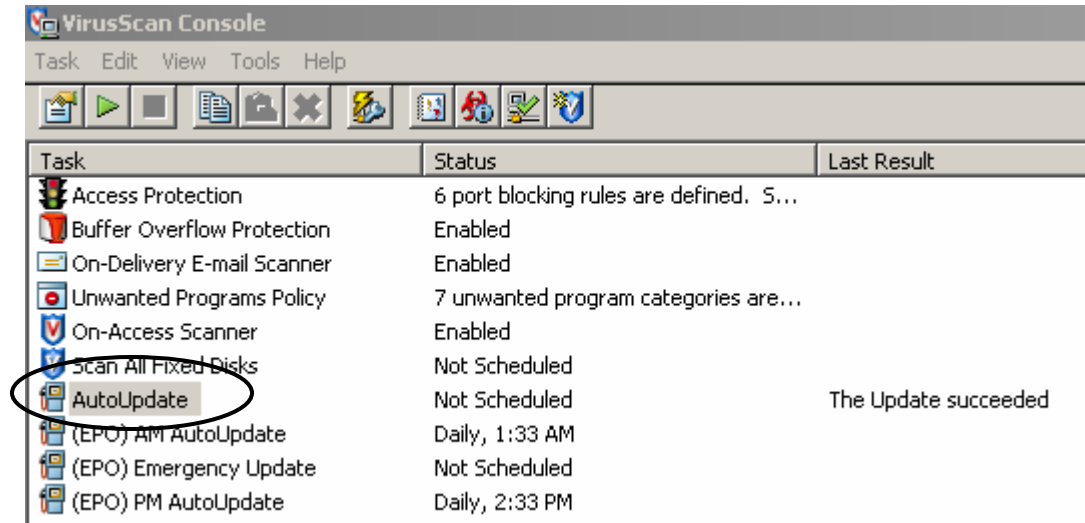
This document provides instructions on configuring settings in McAfee to keep your virus definitions up-to-date. Anyone running the network installed version of McAfee will **NOT** need to follow these instruction as their computers are already configured to update their virus definitions on a daily basis.

These instructions are primarily for faculty, staff, and students who have installed McAfee on their personal computers.

Keep in mind, these instructions apply to the version of McAfee distributed to faculty, staff, and students by The University of Akron – this is the *institutional version* and differs from the commercial version (sold at stores).

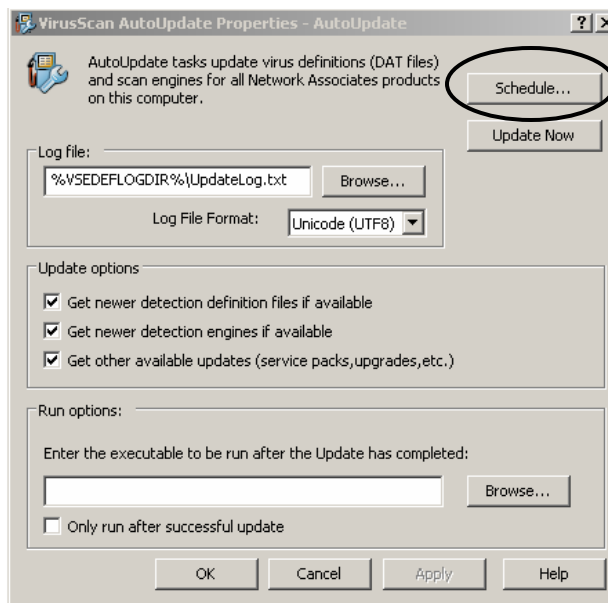
Instructions:

1. Select **Start – All Programs – Network Associates – Virus Scan Console**.
2. The Virus Scan console returns. Double-click on **AutoUpdate**.



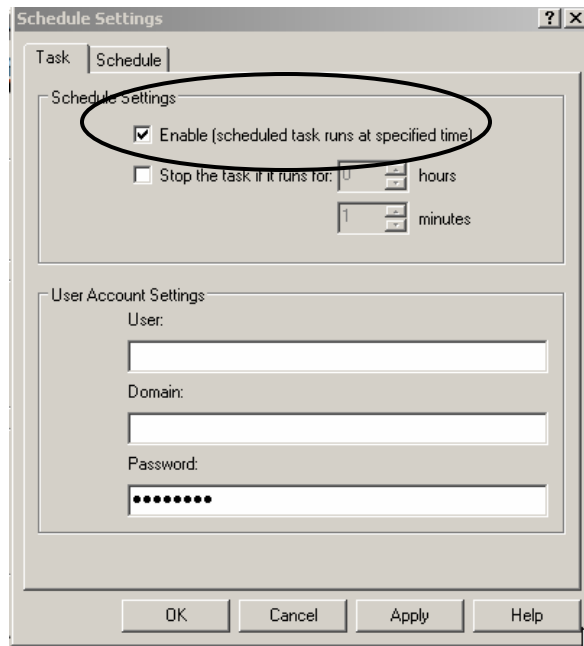
NOTE: This screen shot was taken from a University laptop in which updates are automatically pushed each day as identified by the *(EPO) AM AutoUpdate* and *(EPO) PM AutoUpdate* entries – you would not see these on your home computer.

3. Click the **Schedule** button.

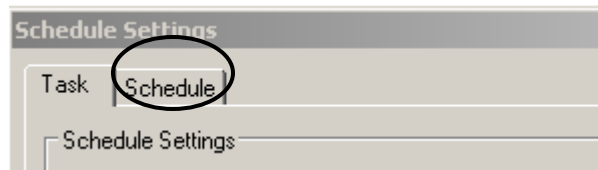


Instructions:

- The Schedule Settings dialog box is returned. Click inside the **Enable** box to enable this setting.



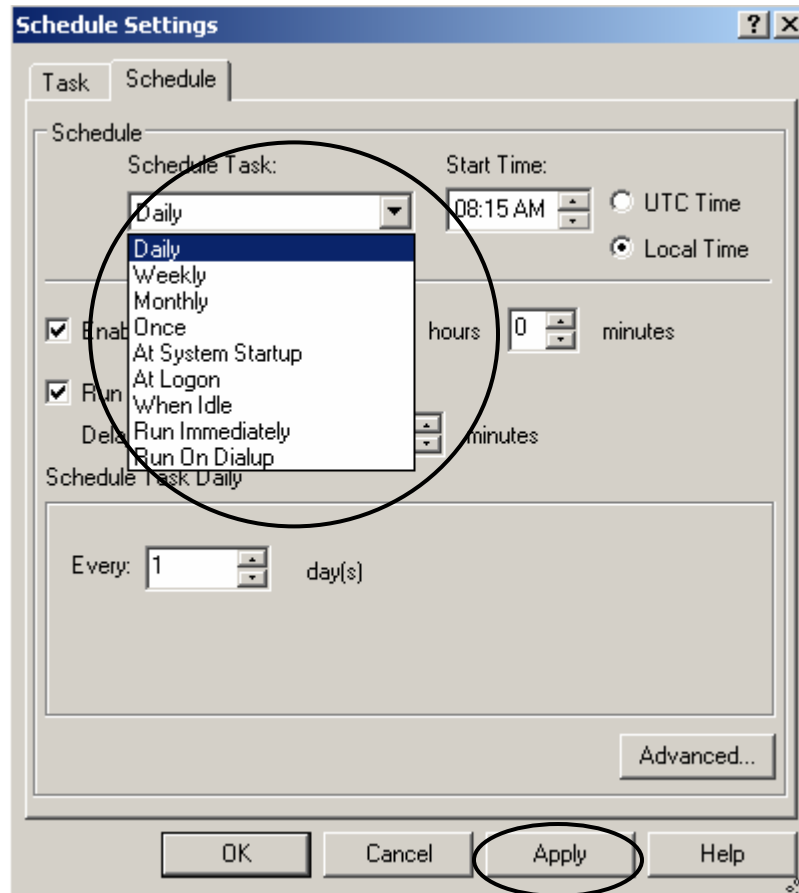
- Click the **Schedule** tab.



Instructions:

- Use the drop-down under “Schedule Task” to schedule a time interval to automatically update your virus software with the latest definitions. The Monthly option is **NOT** recommended since this would leave your computer highly vulnerable to new viruses. The **At Startup** (for broadband clients) or **Run on Dialup** (for dialup clients), is recommended as this would ensure you always get the most current updates.

Click the **Apply** button to save the configuration.



Instructions:

7. You will be returned to the Properties dialog box – click on **OK**.

