

Configure McAfee Settings on Personal/Home Computers

This document provides instructions on recommended settings for McAfee. These instructions are provided for faculty, staff, and students who have obtained a copy of the software from Computer Solutions and installed McAfee on their personal computer. Anyone running the network installed version of McAfee will NOT need to follow these instructions as their computers are automatically configured with these settings.

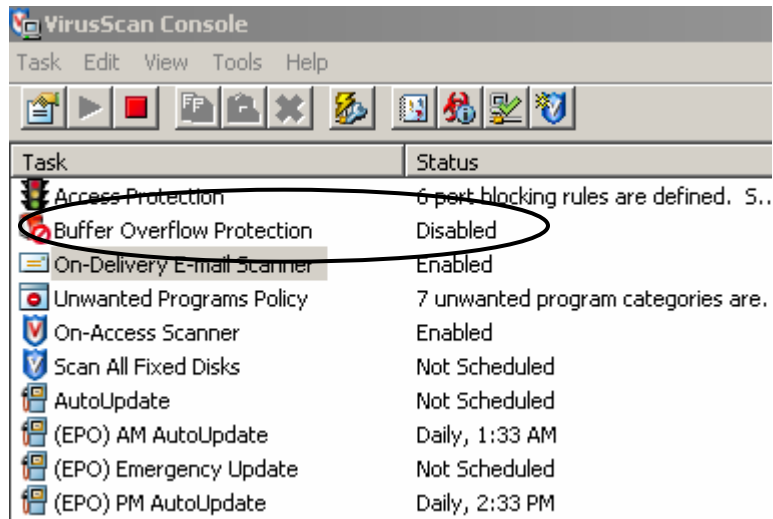
These instructions are primarily for faculty, staff, and students who have installed McAfee on their personal computers.

Keep in mind, these instructions apply to the version of McAfee distributed to faculty, staff, and students by The University of Akron – this is the *institutional version* and differs from the commercial version (sold at stores).

Enable Buffer Overflow Protection

Instructions:

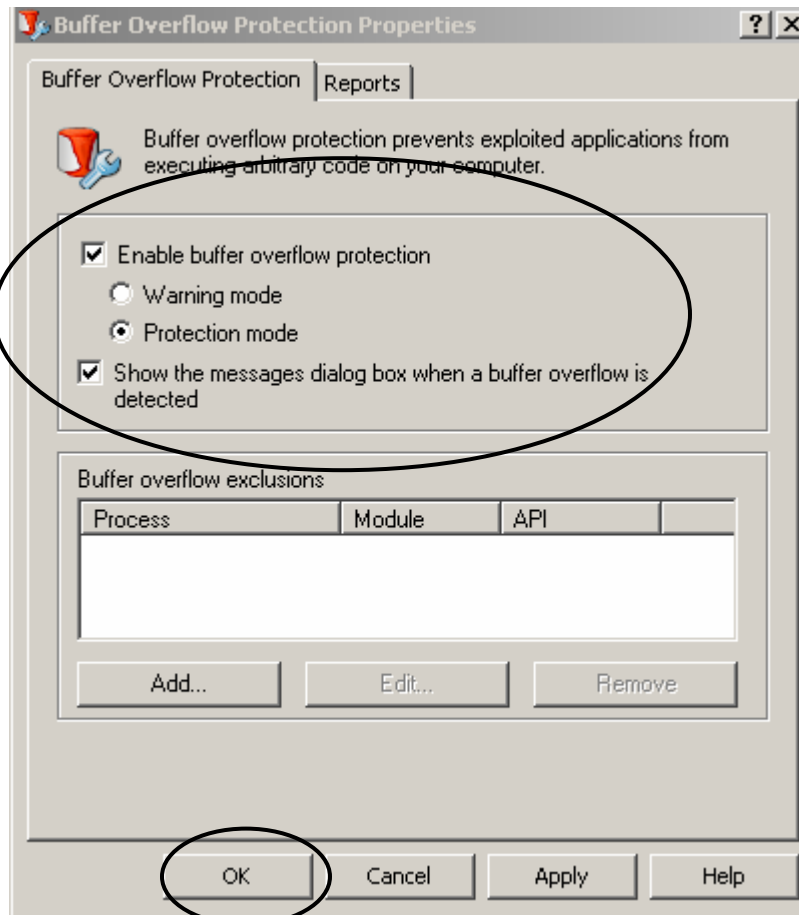
1. Select **Start – All Programs – Network Associates – Virus Scan Console**.
2. The Virus Scan console returns. If the **Buffer Overflow Protection** status is disabled, double-click on **Buffer Overflow Protection** in order to enable this setting.



Instructions:

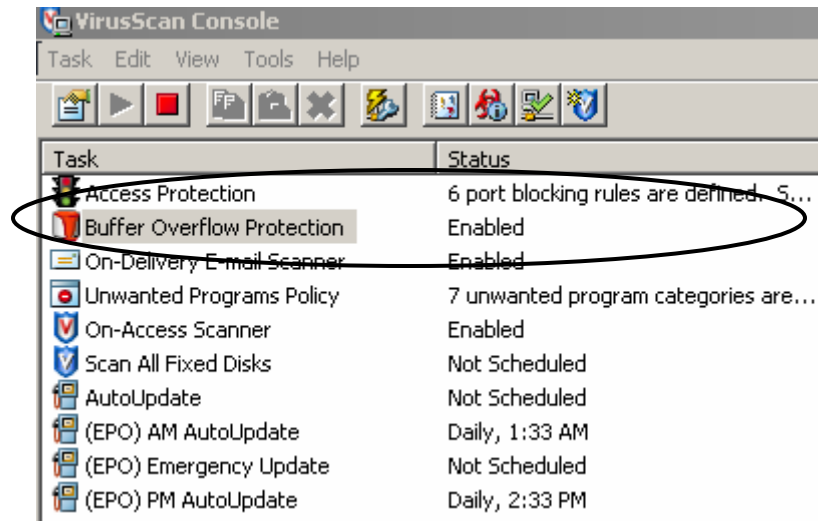
3. Click the checkbox to **“Enable buffer overflow protection”**. Upon checking this box, the **Protection mode** option should be selected and a check should appear for **“Show the messages dialog box when a buffer overflow is detected”**.

Click the **OK** button to accept the changes.



Instructions:

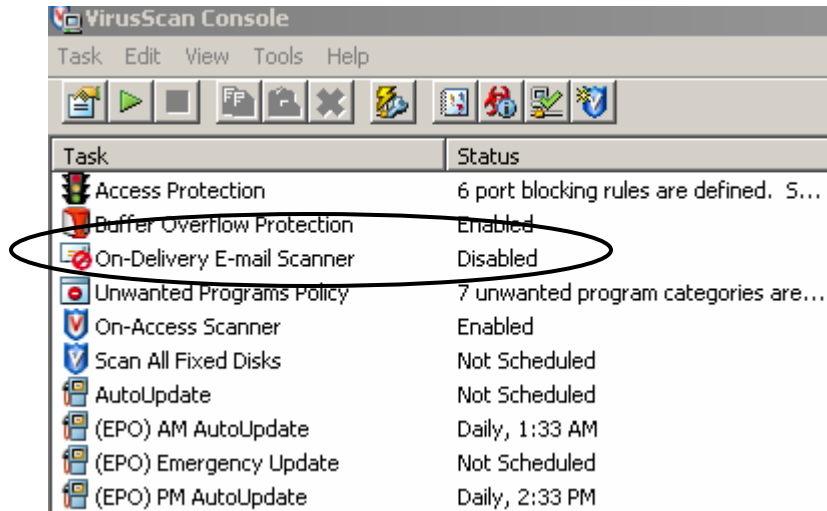
- The VirusScan Console dialog box returns. The status for **Buffer Overflow Protection** should now be **Enabled**.



Enable E-mail Scanning

Instructions:

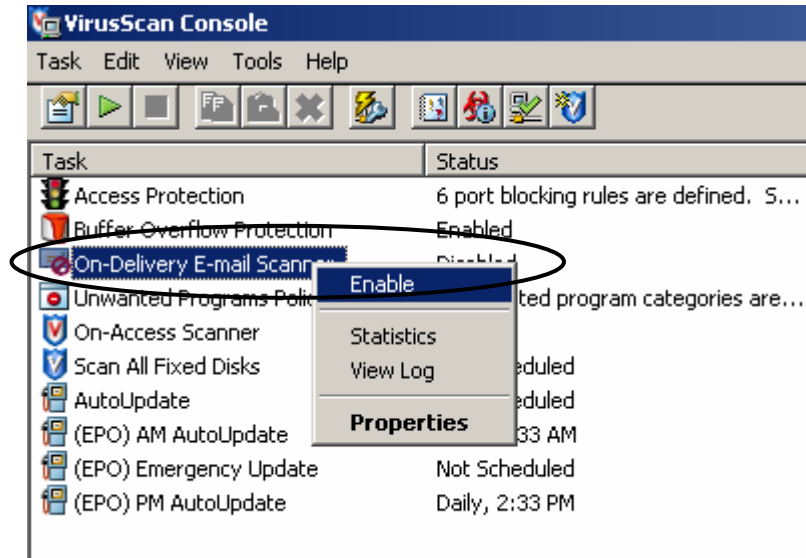
1. Select **Start – All Programs – Network Associates – Virus Scan Console**.
2. The Virus Scan console returns. If the **On-Delivery E-mail Scanner** status is disabled, *right-click* on **On-Delivery E-mail Scanner** in order to enable this setting.



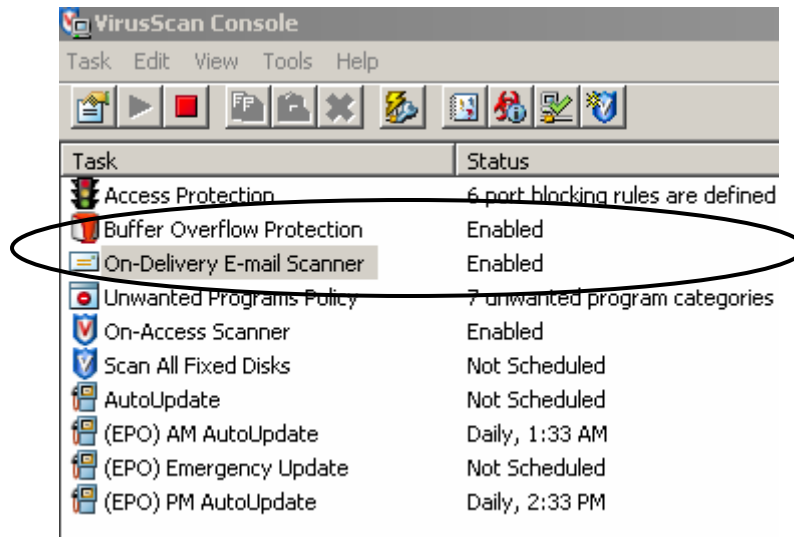
NOTE: If the Status for On-Delivery E-mail Scanner is already set to Enabled you do NOT need to follow these instructions – McAfee is already properly configured to scan e-mail.

Instructions:

3. A menu will appear – select **Enable** to turn-on the e-mail scanning feature.



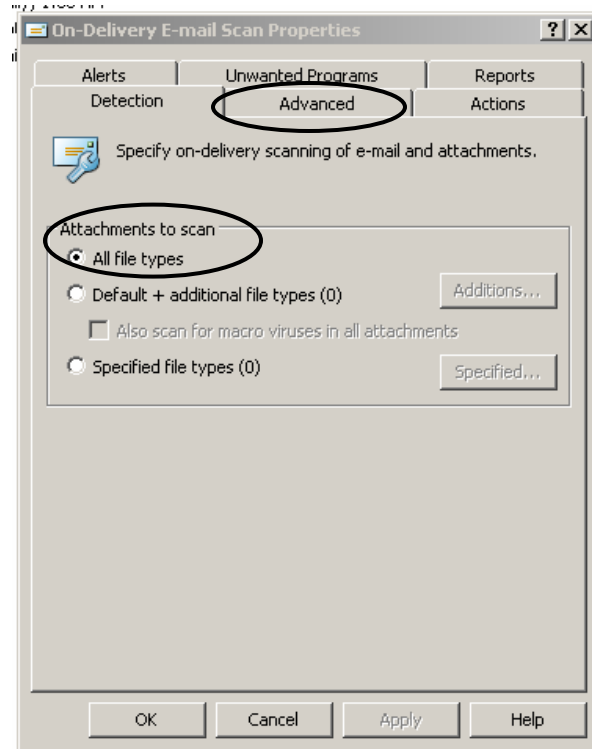
4. Next, we will verify all of the e-mail scanning features are properly configured. Double-click the **On-Delivery E-mail Scanner** entry.



Instructions:

5. On the **Detection** tab, verify the option is set to “**All File Types**”.

Click the **Advanced** tab to review these settings.



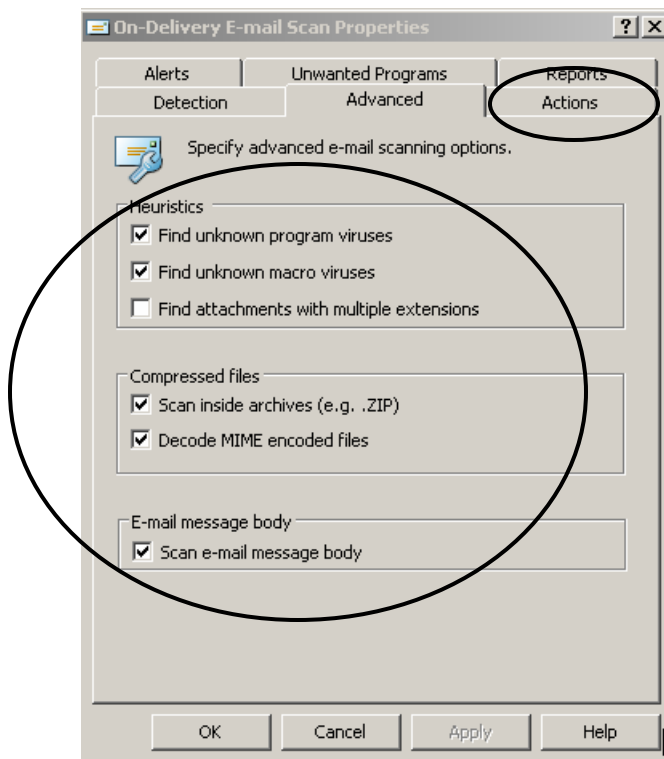
Instructions:

6. On the **Advanced** tab, verify the following settings are turned on under **Heuristics** heading: “**Find unknown program viruses**” and “**Find unknown macro viruses**”.

Under the **Compressed Files** heading verify the following settings are turned on: “**Scan inside archives**” and “**Decode MIME encoded files**”.

Under the **E-mail message body** heading verify the following setting is turned on: “**Scan e-mail message body**”.

Click the **Actions** tab to review these settings.



Instructions:

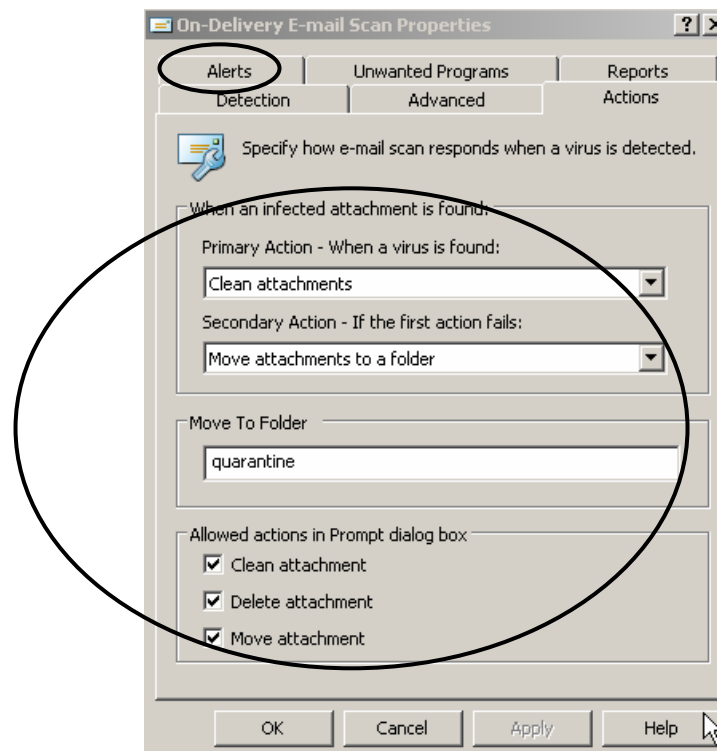
7. On the **Advanced** tab, verify the following settings are properly configured under the **Primary Action** heading: **Clean attachments** should be selected.

Under the **Secondary Action** heading: **Move attachments to a folder** should be selected.

Under the **Move to Folder** heading: **Quarantine**

Under the Allowed Actions in Prompt dialog box, the following options should be selected: **“Clean attachment”**, **“Delete attachment”**, and **“Move attachment”**.

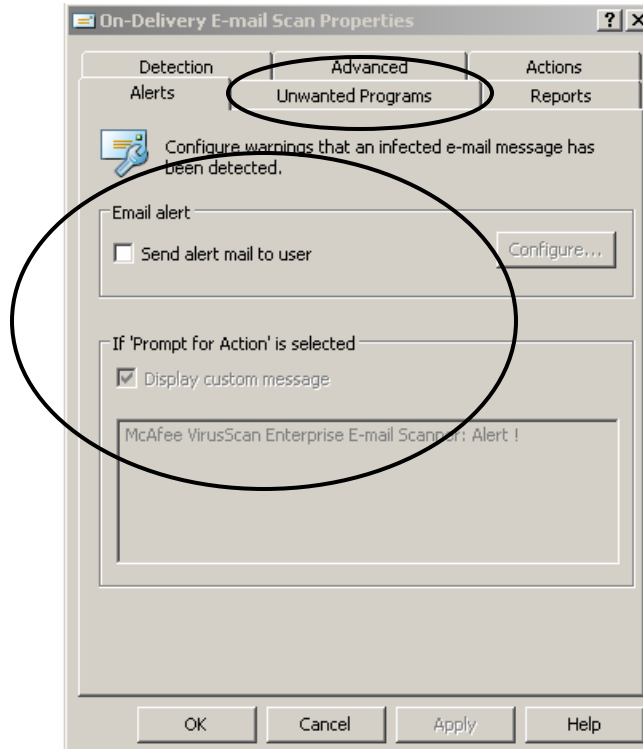
Click the **Alerts** tab to review these settings.



Instructions:

8. On the **Alerts** tab, none of the options should be selected.

Click the **Unwanted Programs** tab to review these settings.



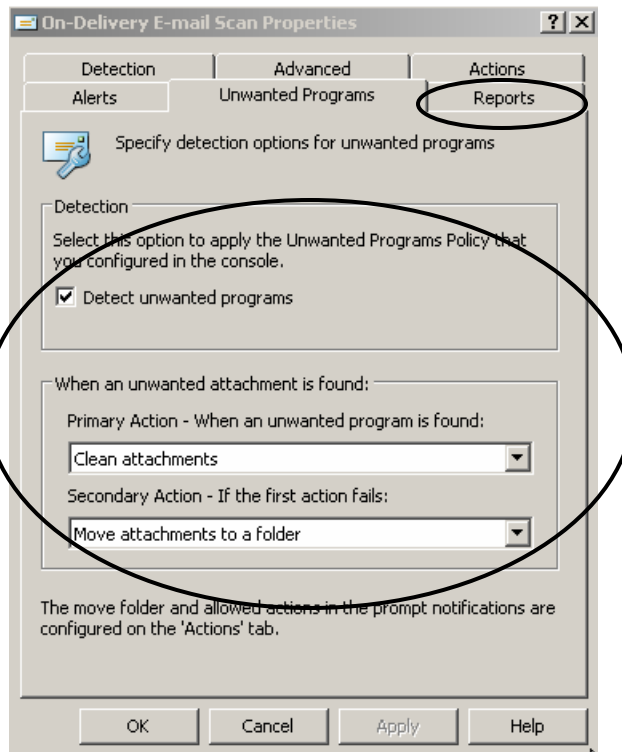
Instructions:

9. On the **Unwanted Programs** tab, verify the “**Detect unwanted programs**” box is selected.

Under the **Primary Action** heading: “**Clean attachments**” should be selected.

Under the **Secondary Action** heading: “**Move attachments to a folder**” should be selected.

Click the **Reports** tab to review these settings.



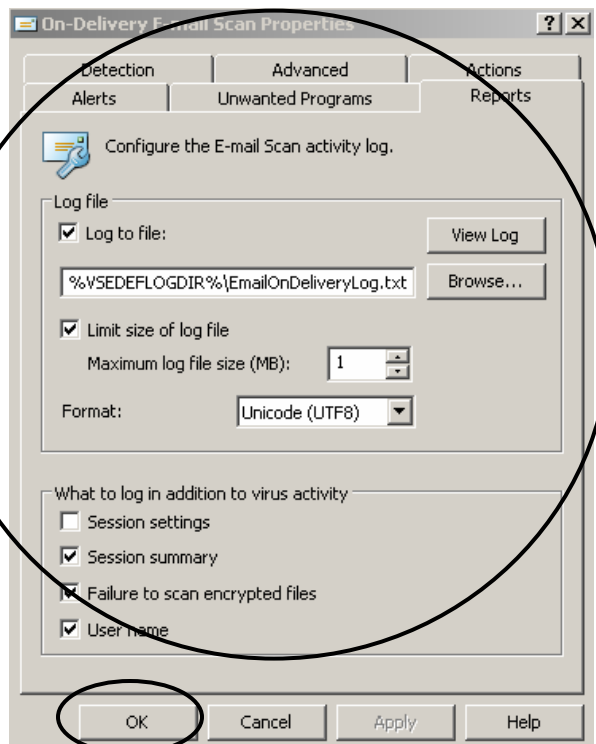
Instructions:

10. On the Reports tab, verify the “**Log to File**” option is selected.

Verify the “**Limit size of log file**” is checked and the “**Maximum log file size**” is set to 1. Under the heading *Format*, **Unicode** should be selected.

Under the heading *What to log in addition to virus activity*, the following options should be selected: “**Session Summary**”, “**Failure to scan encrypted files**”, and “**User Name**”.

Click the **OK** button to accept all changes.

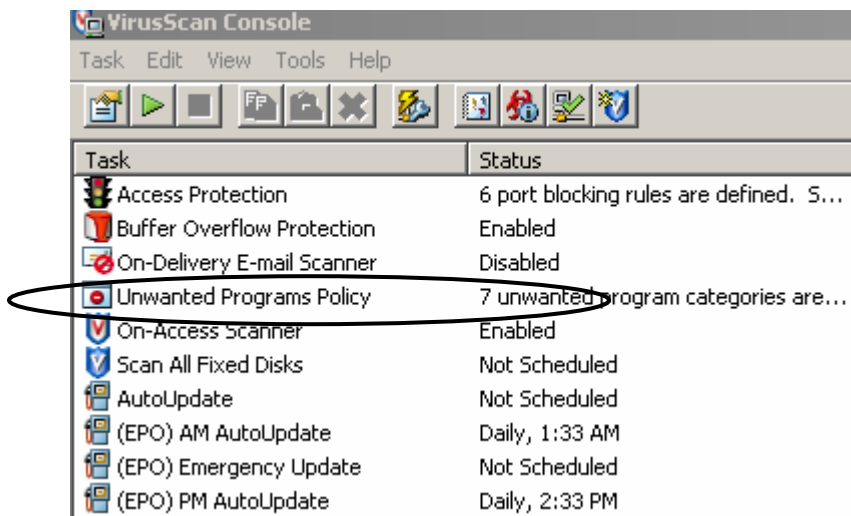


Turn On Unwanted Programs Policy

You should configure categories of unwanted programs. McAfee can then detect these categories and protect your computer from them.

Instructions:

1. Select **Start – All Programs – Network Associates – Virus Scan Console**.
 2. The Virus Scan console returns. Double-click on **Unwanted Programs Policy**.
-



Instructions:

3. The Unwanted Programs Policy dialog box returns. Verify ALL of the boxes are checked to select each of the categories of unwanted programs.

Click the **OK** button.

