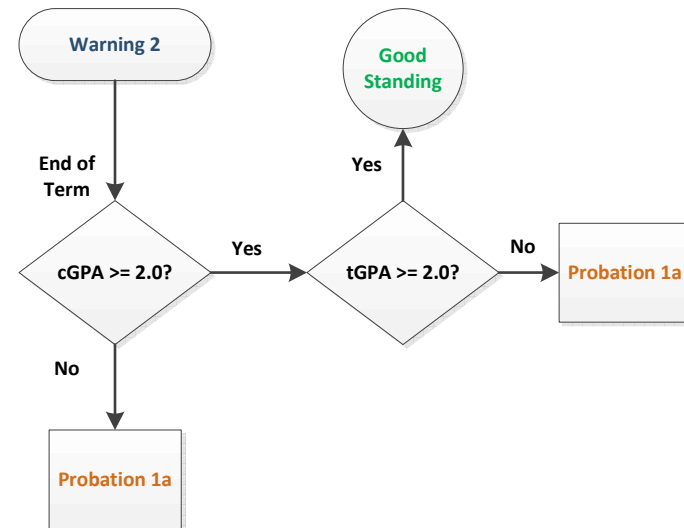
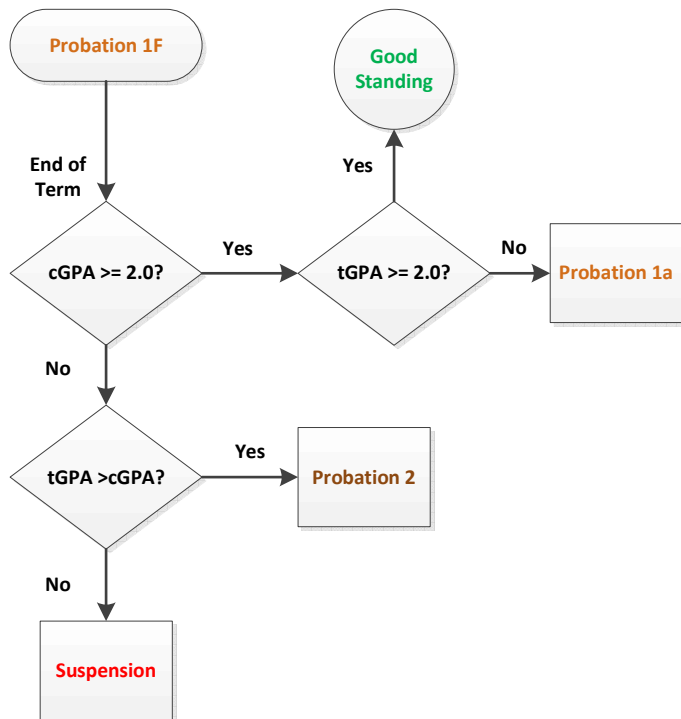
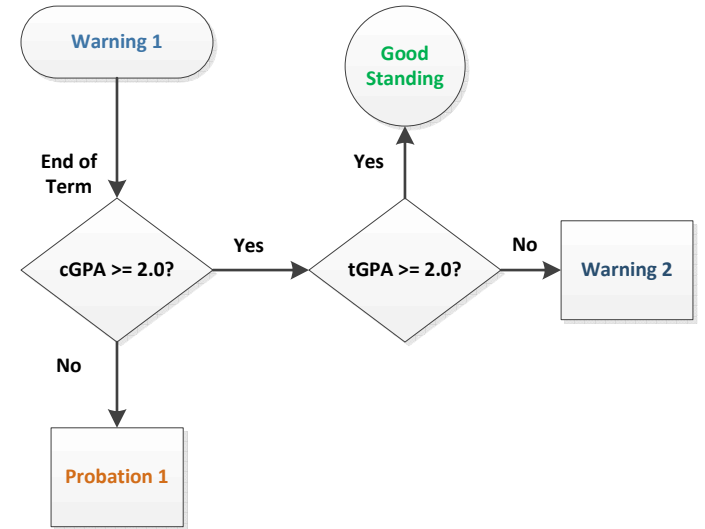
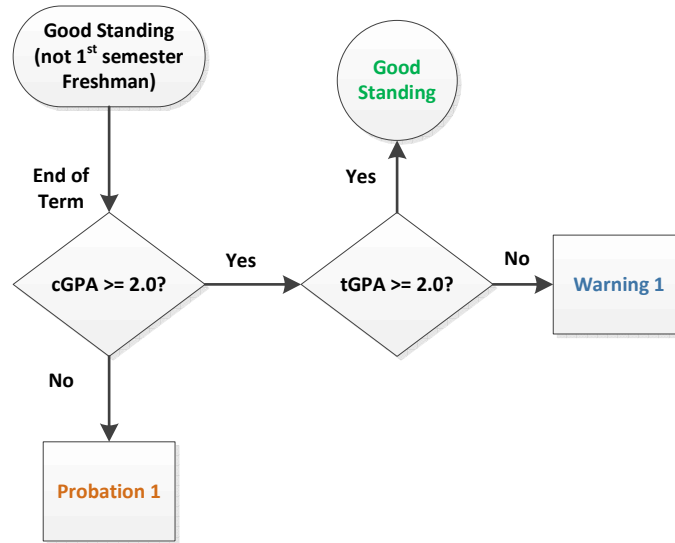
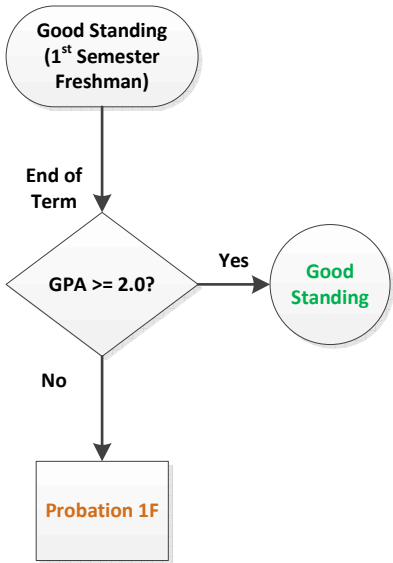


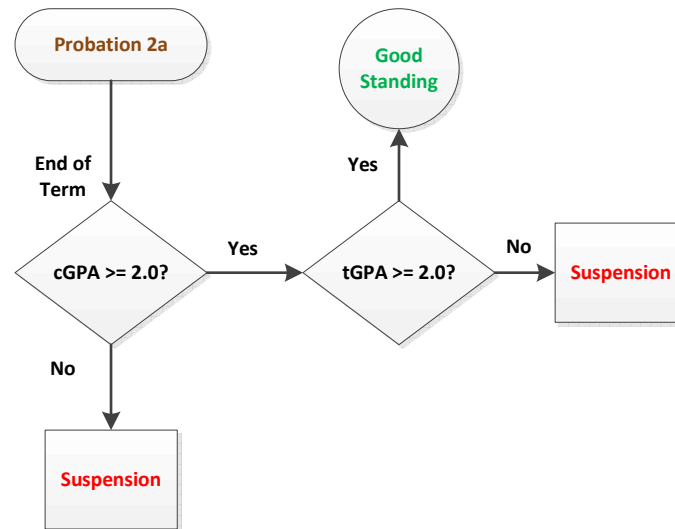
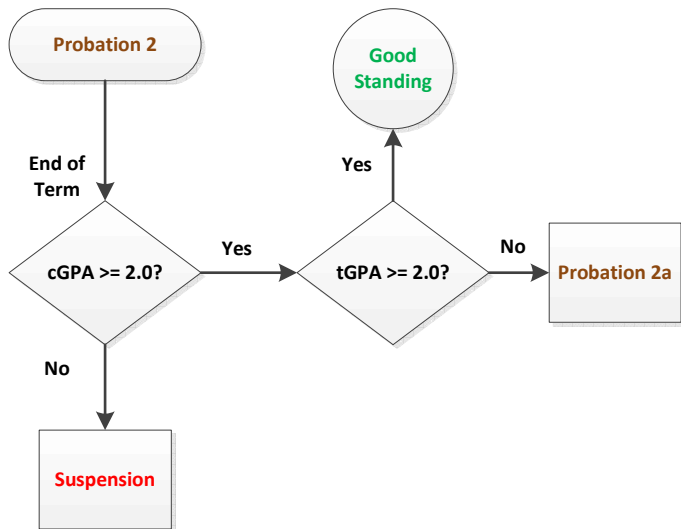
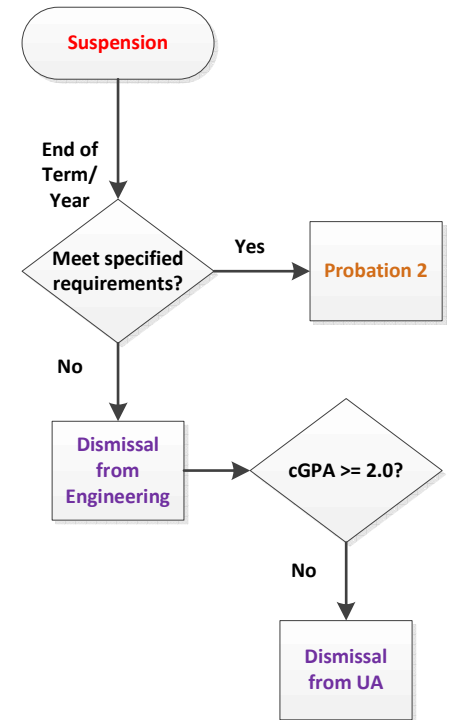
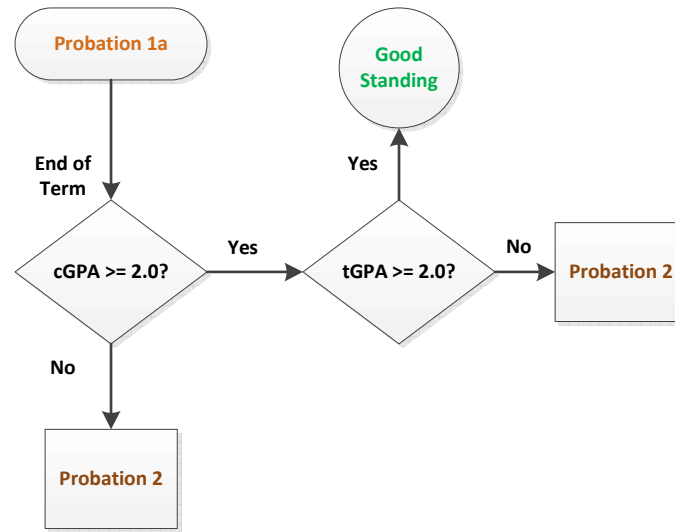
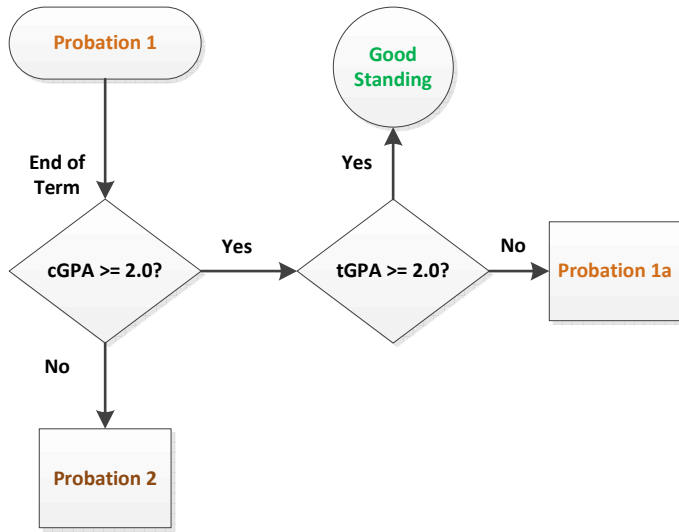
College of Engineering Warning / Probation / Suspension / Dismissal Policy

1. At the end-of-term (Fall and Spring), a student in the College of Engineering will be evaluated as to their status (Good Standing, Warning, Probation, Suspension or Dismissal).
2. A student's status at the end of term will be dependent on three factors: (1) their status entering that term, (2) their term GPA (tGPA) and (3) their cumulative GPA (cPGA).
3. The summer term is not normally included in the evaluation. The end-of-term status for the previous term (normally Spring) is carried forward through the summer term.
4. For students on "Warning", they receive a letter at the end of the term explaining their status and reminding them of the various resources on campus to help.
5. Students on "Probation" have an academic hold preventing registration and must meet with an advisor to complete an Approved Group of Courses form. When this form is submitted to the Engineering Dean's Office, the academic hold is removed for a period of two weeks to allow the student to register. Courses that the students enroll in that are not on the Approved Group of Courses are subject to administrative withdrawal.
6. Students on "Suspension" have an academic hold preventing registration and must meet with the Associate Dean for Undergraduate Studies to be advised and complete an Approved Group of Courses form. After the meeting, the student will receive a formal letter stating what criteria they have to meet in order to avoid dismissal and the academic hold is removed for two weeks to allow the student to register. Courses that the students enroll in that are not on the Approved Group of Courses are subject to administrative withdrawal.
7. Students on "Dismissal" will be administratively withdrawn from any courses in which they are enrolled for the following semester (Summer, Fall or Spring). Additionally, the student must follow the readmission criteria spelled out in their dismissal letter.

For any questions on this policy, please contact Dr. Donald P. Visco, Jr. (dviscoj@uakron.edu), Associate Dean for Undergraduate Studies, College of Engineering.

College of Engineering Warning/Probation/Suspension/Dismissal Flowchart





Notes:

- Students on Probation or Suspension receive an Academic Hold on their registration.
- Students on Probation MUST meet with an Advisor and complete an Approved Group of Courses
- Students on Suspension are advised in the Engineering Dean's Office exclusively and must meet specified requirements to avoid dismissal.